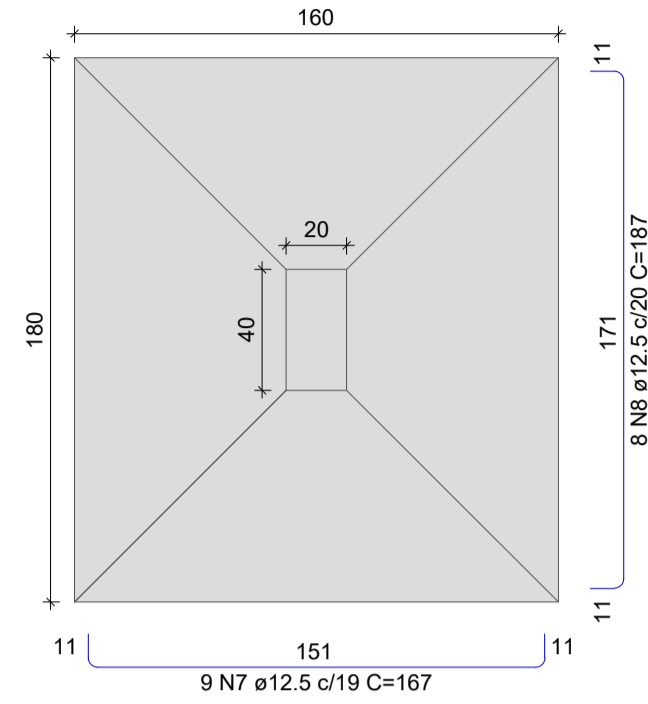
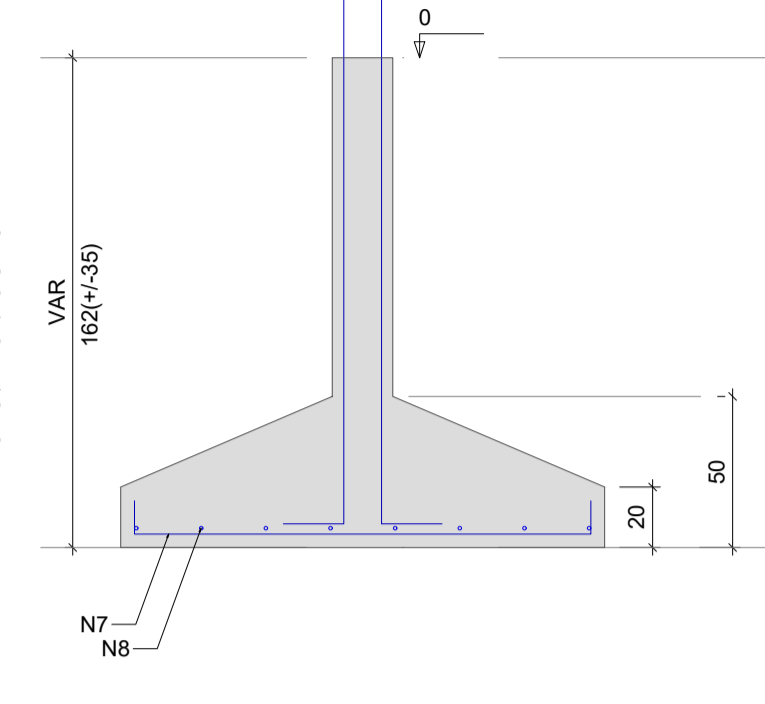


S1
PLANTA
ESC 1:25



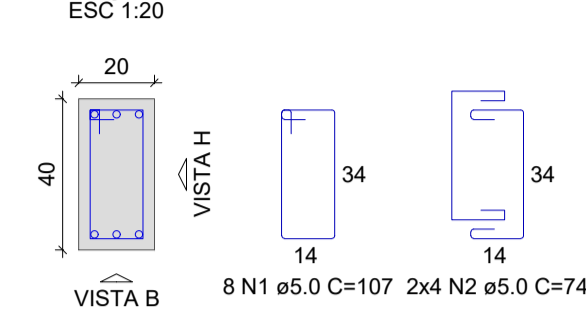
CORTE
ESC 1:25



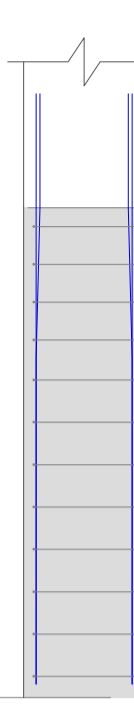
P1

TERREO - L1

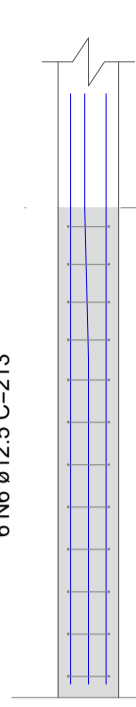
SEÇÃO
ESC 1:20



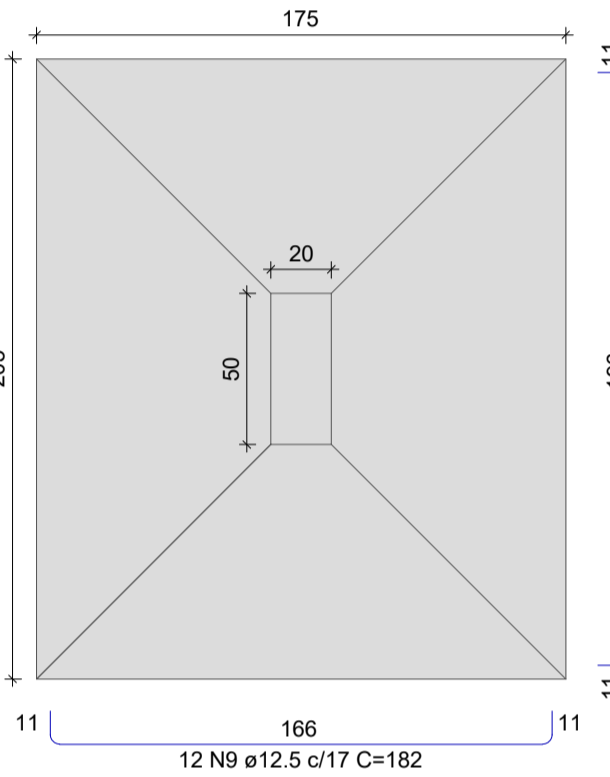
VISTA H
ESC 1:25



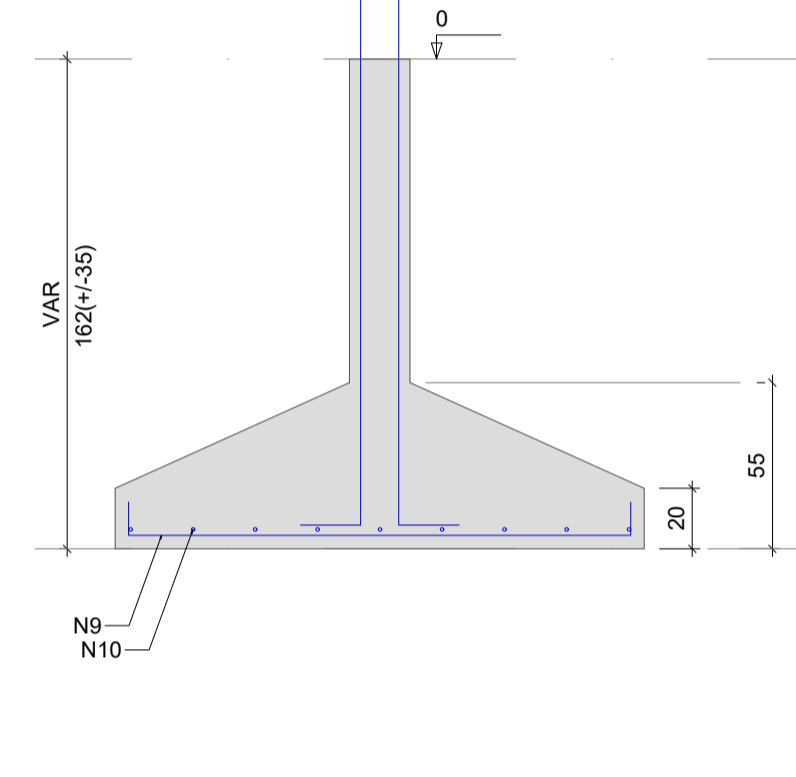
VISTA B
ESC 1:25



S2
PLANTA
ESC 1:25



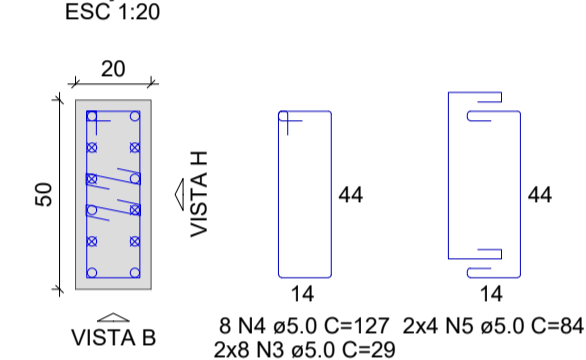
CORTE
ESC 1:25



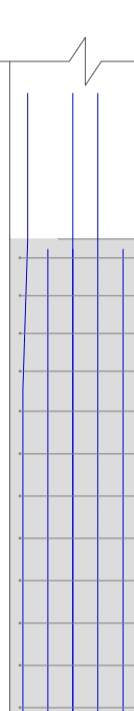
P2

TERREO - L1

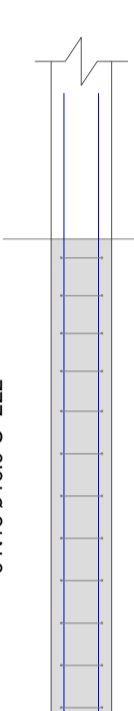
SEÇÃO
ESC 1:20



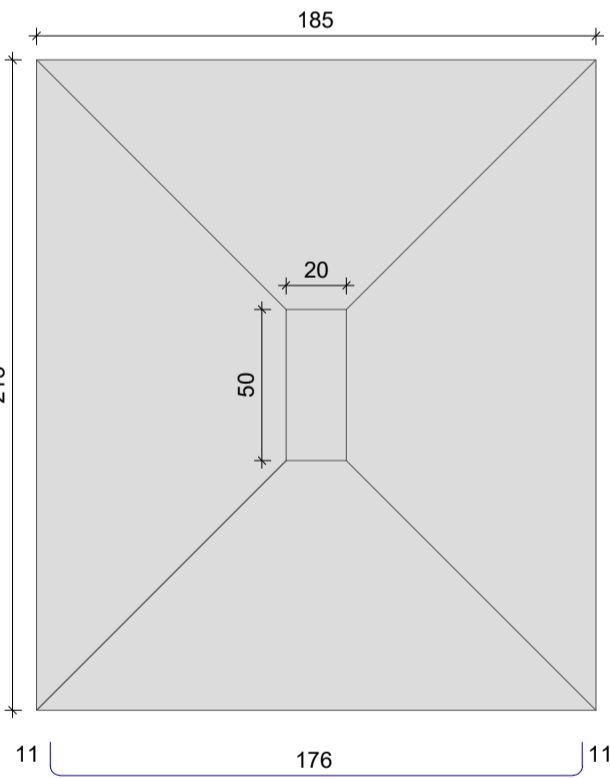
VISTA H
ESC 1:25



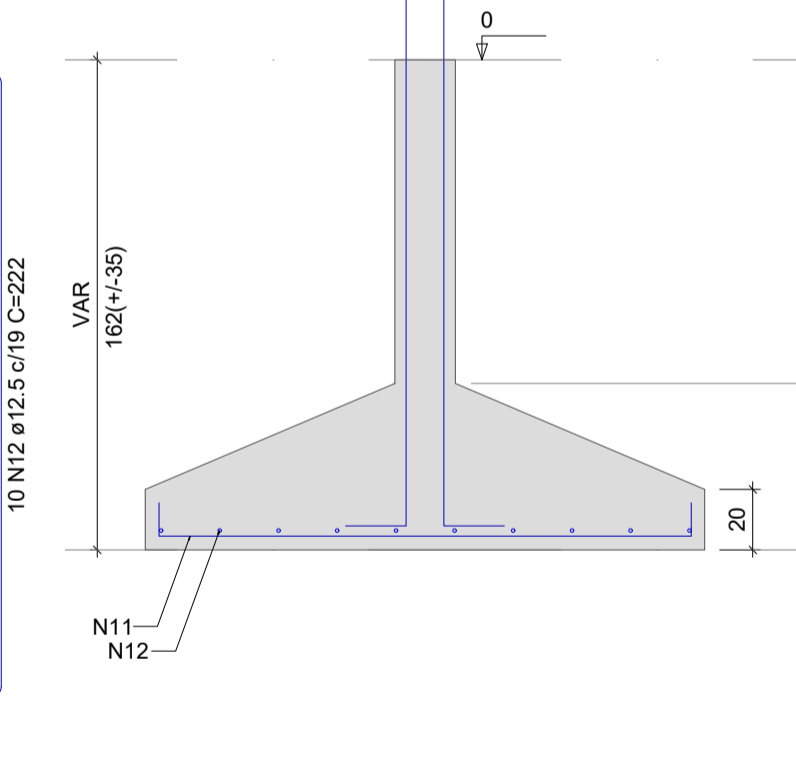
VISTA B
ESC 1:25



S3
PLANTA
ESC 1:25



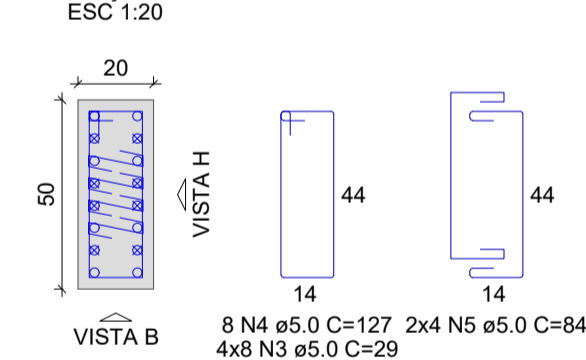
CORTE
ESC 1:25



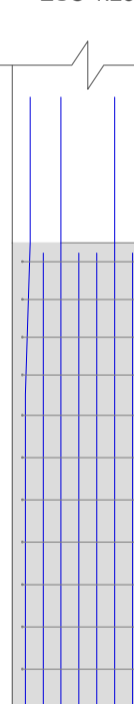
P3

TERREO - L1

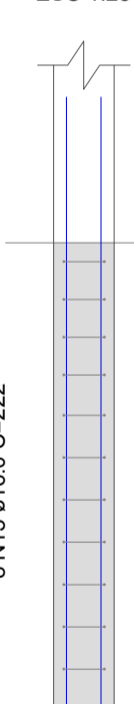
SEÇÃO
ESC 1:20



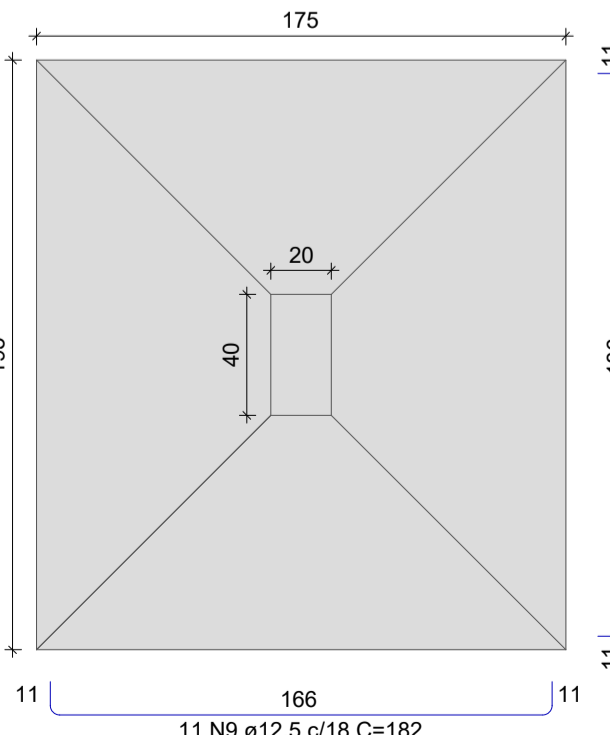
VISTA H
ESC 1:25



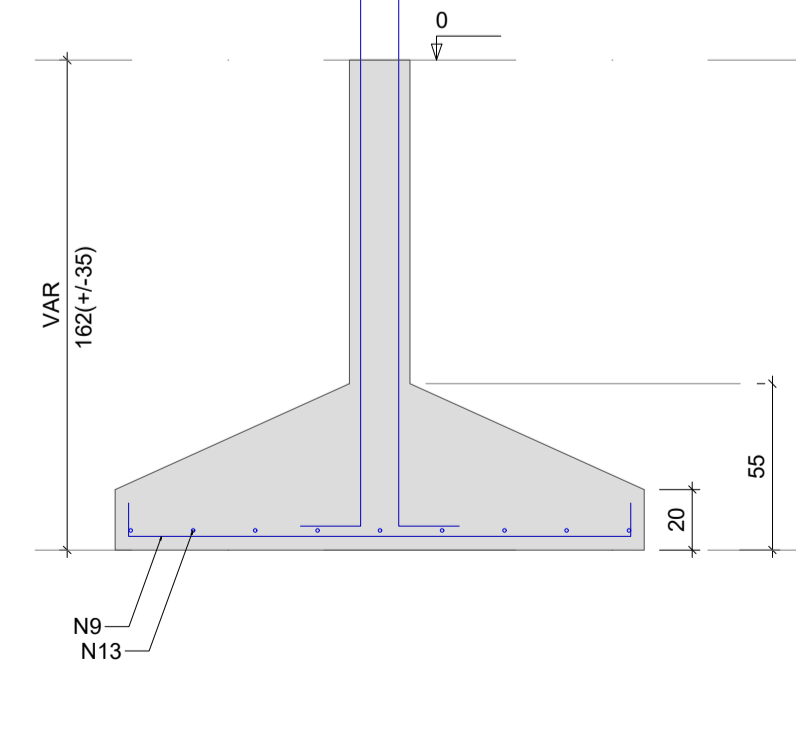
VISTA B
ESC 1:25



S4
PLANTA
ESC 1:25



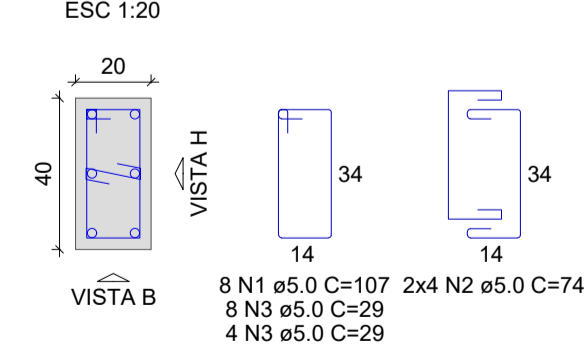
CORTE
ESC 1:25



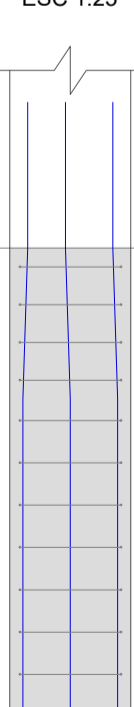
P4

TERREO - L1

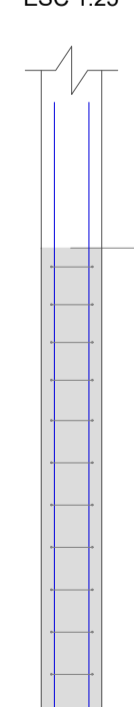
SEÇÃO
ESC 1:20



VISTA H
ESC 1:25



VISTA B
ESC 1:25



RELAÇÃO DO AÇO

AÇO	N	DIAM (mm)	QUANT	C.UNIT (cm)	C.TOTAL (cm)
CA60	1	5.0	16	107	1712
	2	5.0	16	74	1184
	3	5.0	84	29	2436
	4	5.0	16	127	2032
	5	5.0	16	84	1344
CA50	6	12.5	6	213	1278
	7	12.5	9	167	1503
	8	12.5	8	187	1496
	9	12.5	23	182	4186
	10	12.5	9	212	1908
	11	12.5	13	192	2496
	12	12.5	10	222	2220
	13	12.5	9	202	1818
	14	16.0	14	170	2380
	15	16.0	20	222	4440

RESUMO DO AÇO

AÇO	DIAM (mm)	C.TOTAL (m)	PESO + 0% (kg)
CA50	12.5	169.1	182.9
CA60	16.0	68.2	107.6
CA60	5.0	87.1	13.4
PESO TOTAL (kg)			
CA50		270.5	
CA60		13.4	

Volume de concreto (C-35) = 5.02 m³
Área de forma = 11.58 m²

UNIVERSIDADE FEDERAL DE ALFENAS - UNIFAL-MG COORDENADORIA DE PROJETOS E OBRAS - CPO/Proplan	
CONTEÚDO: PROJETO ESTRUTURAL DA SALA DE MÁQUINAS DO PRÉDIO "O"	LOCAL DA OBRA: UNIDADE EDUCACIONAL SANTA CLARA
PROPRIETÁRIO: UNIVERSIDADE FEDERAL DE ALFENAS / UNIFAL-MG CNPJ: 17.879.859/0001-15	TIPO DE PROJETO: PROJETO BÁSICO
CONTEÚDO DA PRANCHA: DETALHAMENTO DAS SAPATAS S1, S2, S3, E S4	
	ASSINATURAS: PROPRIETÁRIO: UNIVERSIDADE FEDERAL DE ALFENAS / UNIFAL-MG CNPJ: 17.879.859/0001-15 RESPONSÁVEL TÉCNICO: RICARDO LAGUARDIA JUSTEN DE ALMEIDA CREA: 228.803/D
APROVAÇÕES:	ÁREAS:
ESCALA: INDICADA	DATA: JULHO DE 2024
DESENHO: RICARDO LAGUARDIA JUSTEN DE ALMEIDA	OBSERVAÇÕES: DECLARO QUE A APROVAÇÃO DO PROJETO NÃO IMPLICA EM RESPONSABILIDADE DO PROJETO DE PROPRIEDADE DO TITULAR. DIREITOS RESERVADOS. PROIBIDA A REPRODUÇÃO PARCIAL OU TOTAL DO PROJETO SEM A EXPRESSA AUTORIZAÇÃO DO AUTOR.
	PRANCHA: 01/02