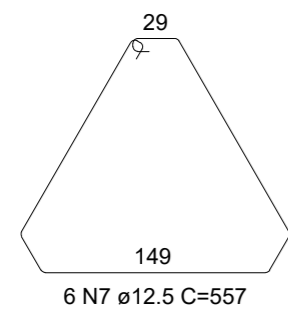
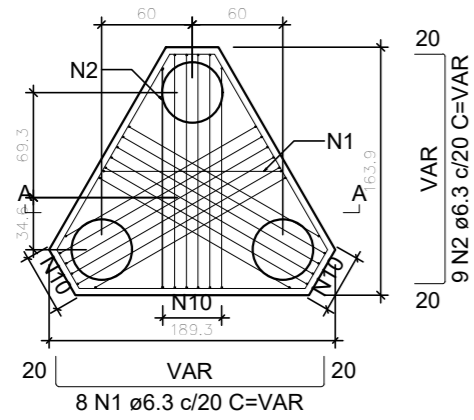
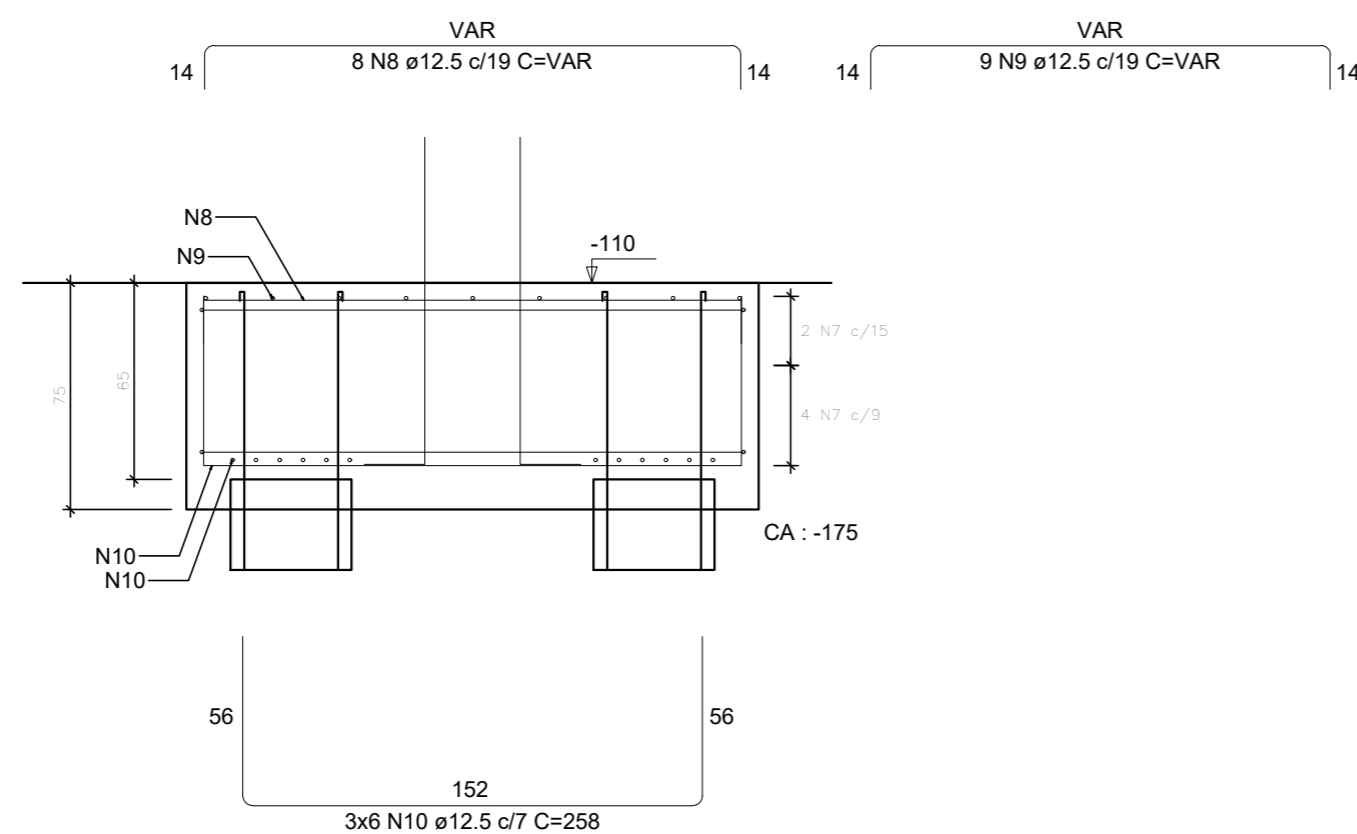


B1=B5  
3xC40  
PLANTA  
ESC 1:50

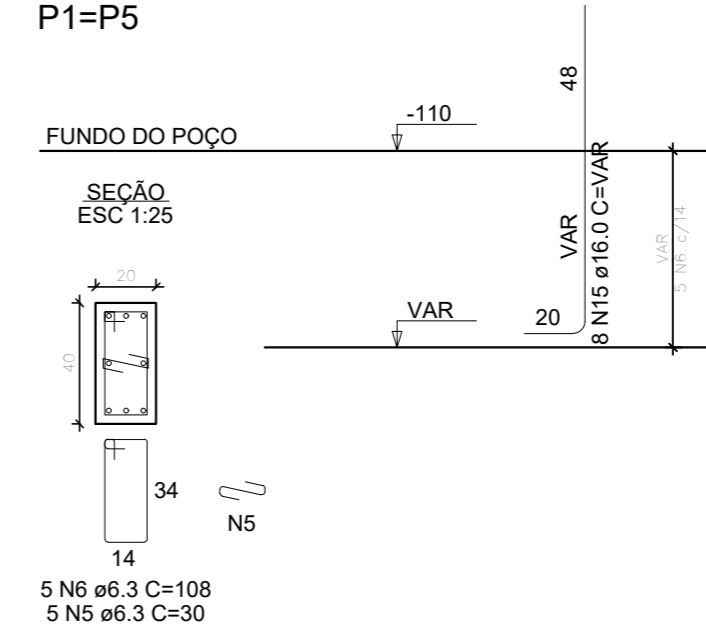


CORTE A-A  
ESC 1:25



Aviso - Bloco com estaca tracionada:  
Prever armaduras das estacas  
ancoradas na face superior do bloco.

P1=P5



RELAÇÃO DO AÇO

AÇO	N	DIAM (mm)	QUANT	C.UNIT (cm)	C.TOTAL (cm)
CA50	1	6.3	16	VAR	VAR
	2	6.3	18	VAR	VAR
	3	6.3	4	205	820
	4	6.3	10	200	2000
	5	6.3	10	30	300
	6	6.3	18	108	1944
	7	12.5	12	557	6684
	8	12.5	16	VAR	VAR
	9	12.5	18	VAR	VAR
	10	12.5	36	258	9288
	11	12.5	10	464	4640
	12	12.5	10	190	1900
	13	12.5	16	238	3808
	14	12.5	16	VAR	VAR
	15	16.0	16	VAR	VAR

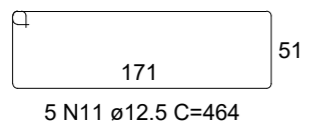
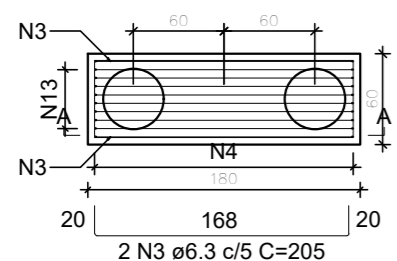
RESUMO DO AÇO

AÇO	DIAM (mm)	C.TOTAL (m)	PESO + 0% (kg)
CA50	6.3	118.9	29.1
	12.5	343.3	330.7
	16.0	20	31.6

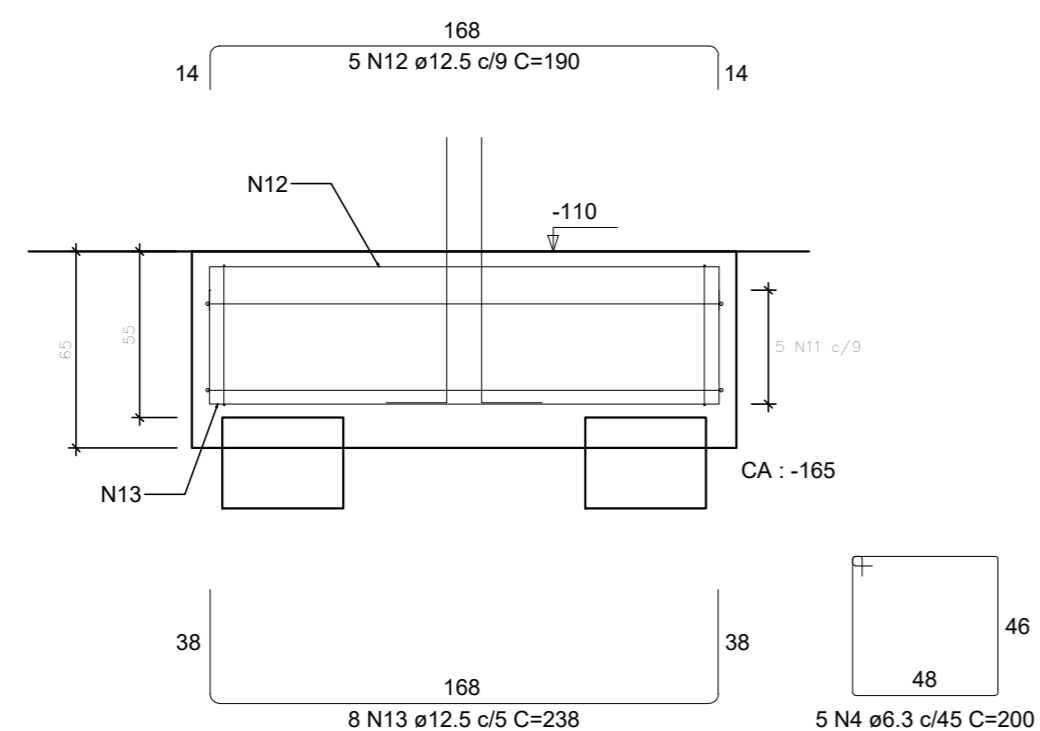
PESO TOTAL (kg)  
CA50 391.4

Volume de concreto (C-35) = 4.30 m³  
Área de forma = 14.76 m²

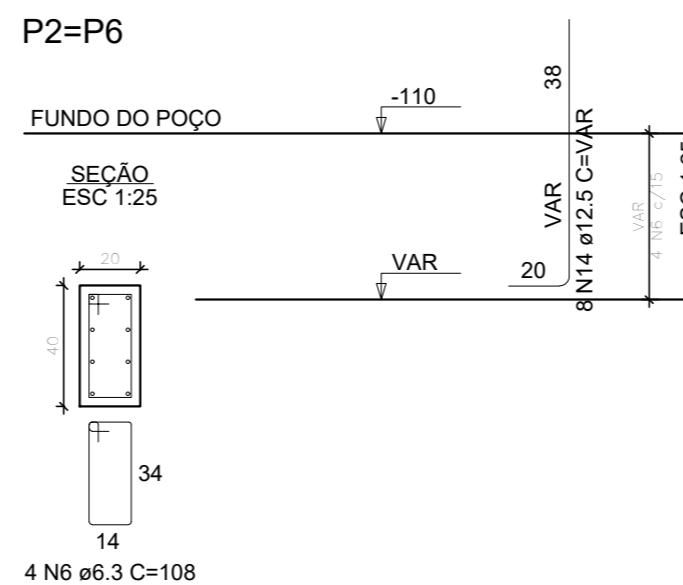
B2=B6  
2xC40  
PLANTA  
ESC 1:50



CORTE A-A  
ESC 1:25



P2=P6



PROJETO ESTRUTURAL  
PRÉDIO O - SEDE

BLOCOS DE FUNDAÇÃO

B1, B2, B5, B6  
POÇO DO ELEVADOR

Escala: indicada

Desenho:

Data: 30/01/2024

Revisão: 0

Unidade: cm

DESENHO

01

FOLHA

01/02