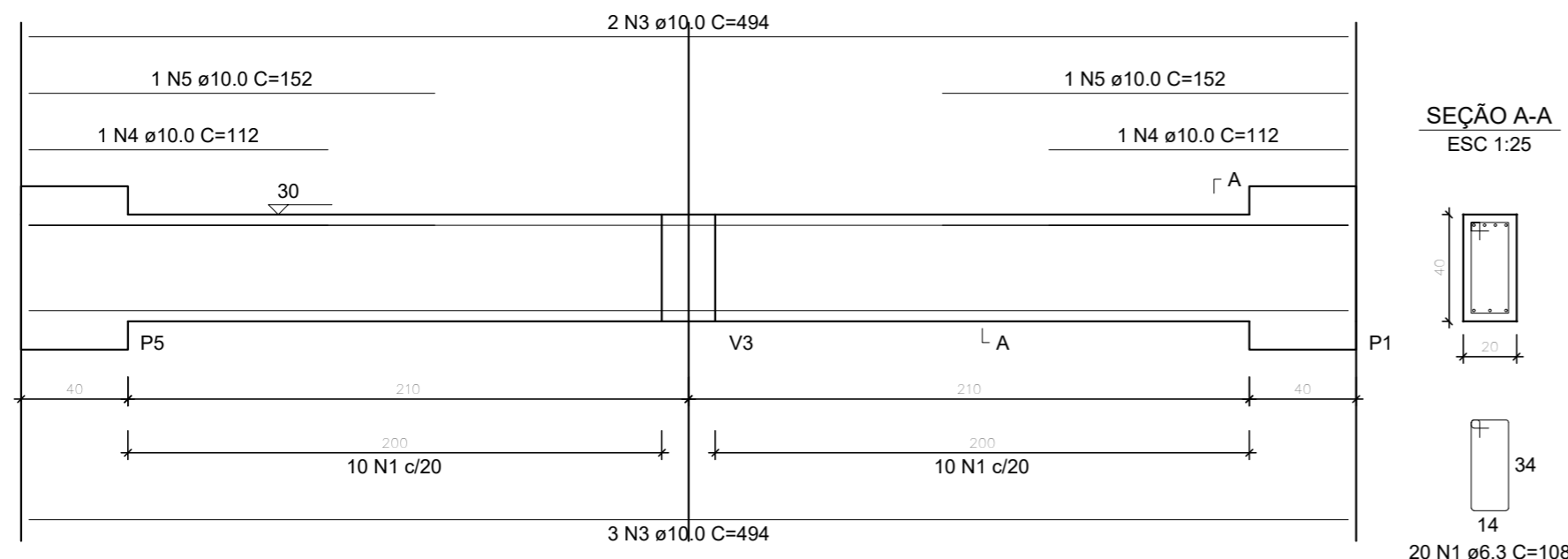
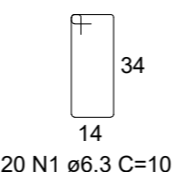
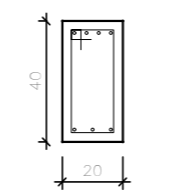


V6

ESC 1:25



SEÇÃO A-A
ESC 1:25



RELAÇÃO DO AÇO

AÇO	N	DIAM (mm)	QUANT	V6		V7		V8	
				C.UNIT (cm)	C.TOTAL (cm)	C.UNIT (cm)	C.TOTAL (cm)	C.UNIT (cm)	C.TOTAL (cm)
CA50	1	6.3	42	108	4536				
	2	6.3	116	106	12296				
	3	10.0	5	494	2470				
	4	10.0	2	112	224				
	5	10.0	2	152	304				
	6	10.0	7	513	3591				
	7	10.0	2	141	282				
	8	10.0	3	541	1623				
	9	12.5	2	141	282				
	10	12.5	4	552	2208				

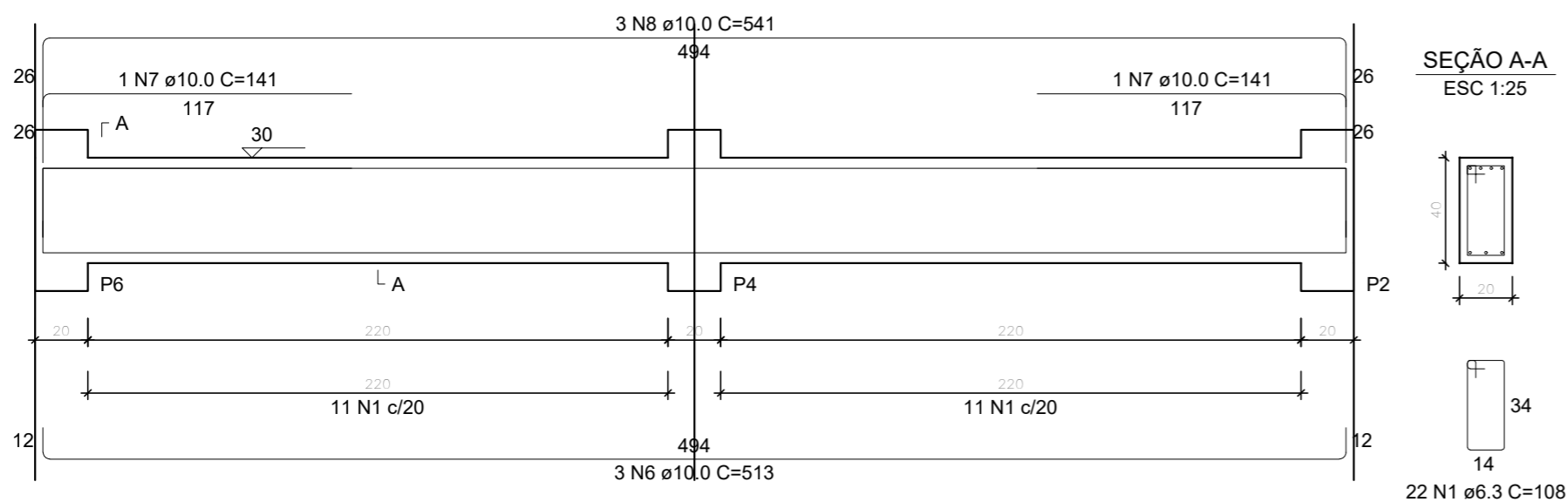
RESUMO DO AÇO

AÇO	DIAM (mm)	C.TOTAL (m)	PESO + 0% (kg)
CA50	6.3	168.3	41.2
	10.0	84.9	52.4
	12.5	24.9	24
PESO TOTAL (kg)			
CA50		117.5	

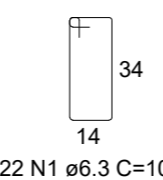
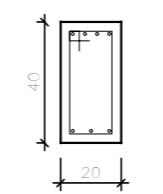
Volume de concreto (C-35) = 1.24 m³
Área de forma = 13.10 m²

V7

ESC 1:25

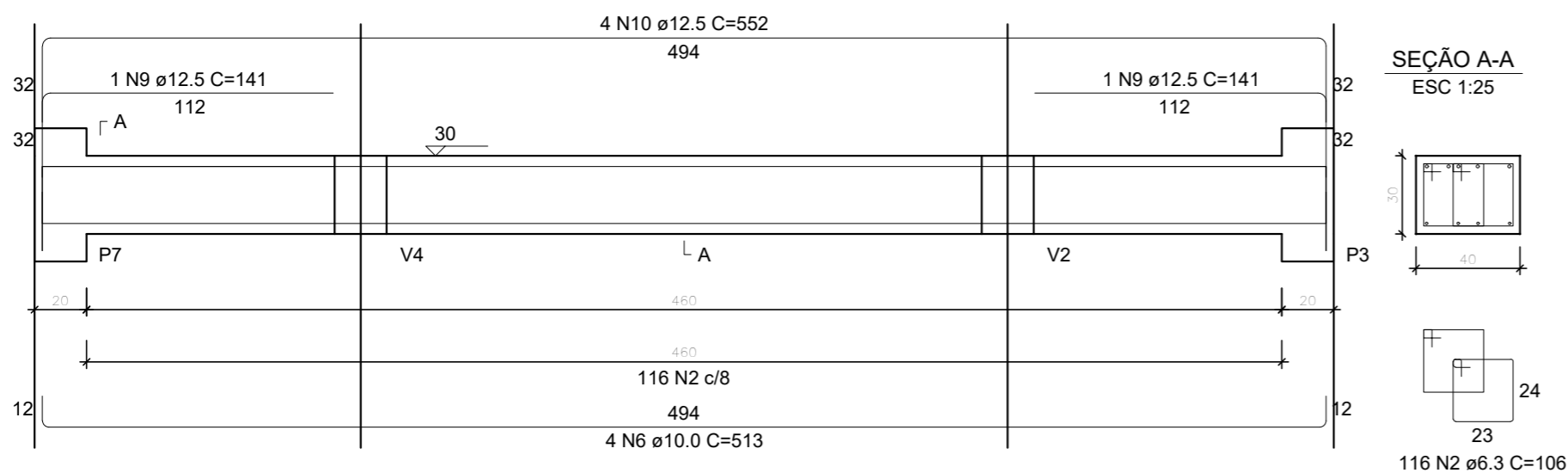


SEÇÃO A-A
ESC 1:25

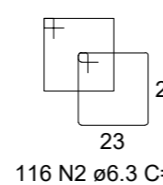
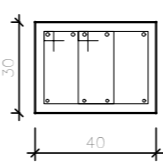


V8

ESC 1:25



SEÇÃO A-A
ESC 1:25



PROJETO ESTRUTURAL

PRÉDIO O - SEDE

VIGAS

V6, V7, V8

PRIMEIRA PARADA

Escala: indicada

DESENHO

01

Desenho:

Revisão: 0

FOLHA

03/19

Data: 30/01/2024

Unidade: cm