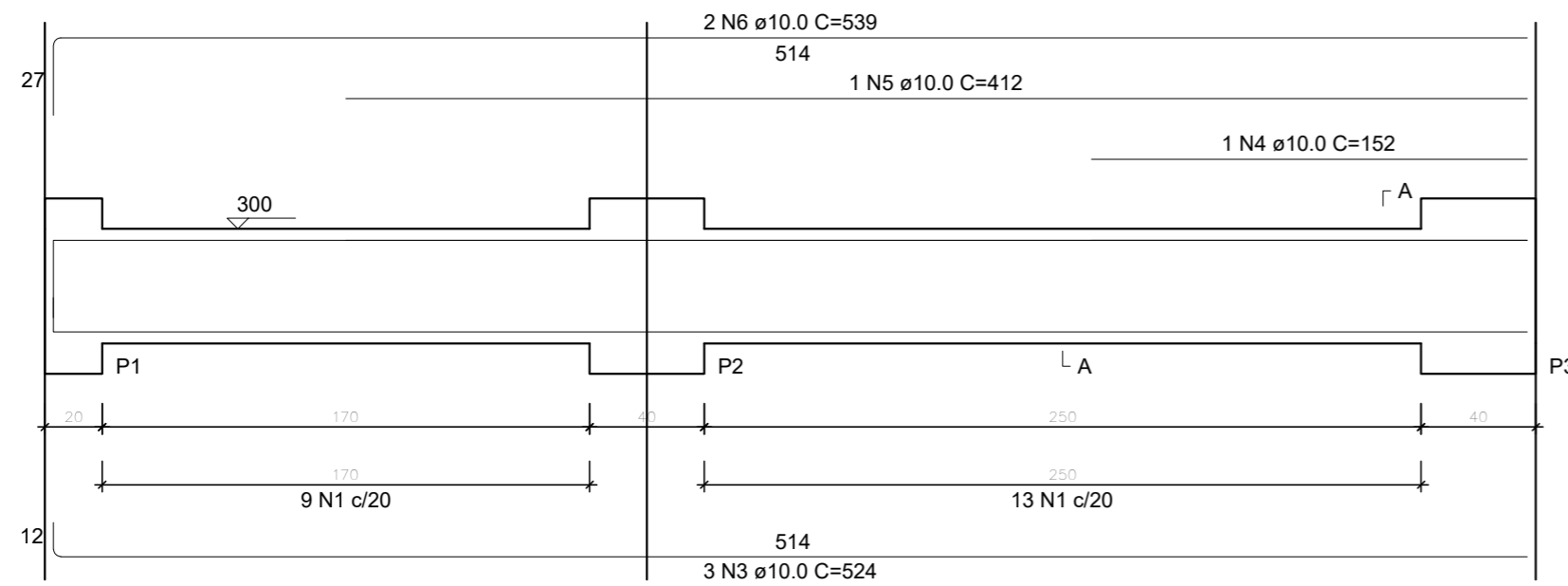
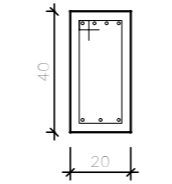


V1
ESC 1:25

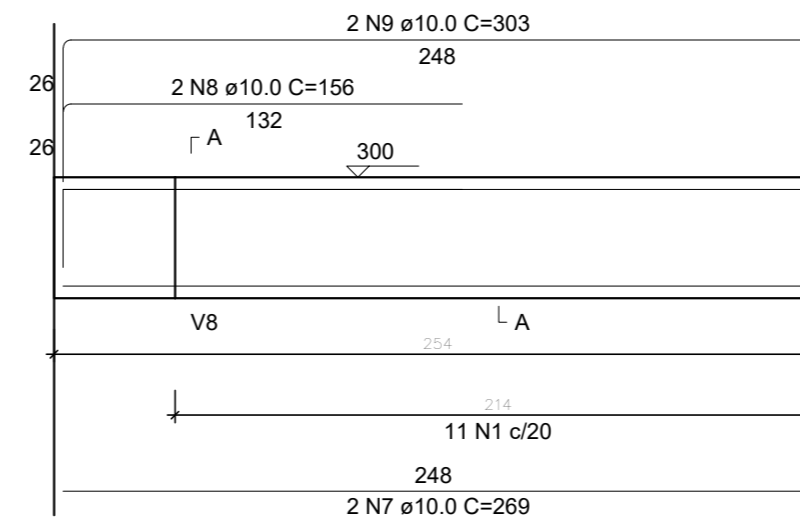


SEÇÃO A-A
ESC 1:25

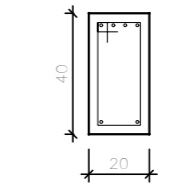


34
14
22 N1 ø6.3 C=108

V2
ESC 1:25



SEÇÃO A-A
ESC 1:25



34
14
11 N1 ø6.3 C=108

RELAÇÃO DO AÇO

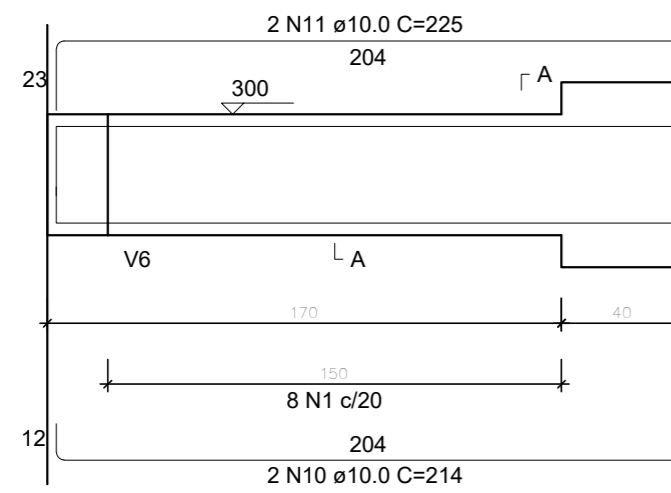
AÇO	N	DIAM (mm)	QUANT	V1		V2		V3	
				C.UNIT (cm)	C.TOTAL (cm)	C.UNIT (cm)	C.TOTAL (cm)	C.UNIT (cm)	C.TOTAL (cm)
CA50	1	6.3	74	108	7992				
	2	6.3	1	82	82				
	3	10.0	5	524	2620				
	4	10.0	2	152	304				
	5	10.0	2	412	824				
	6	10.0	2	539	1078				
	7	10.0	4	269	1076				
	8	10.0	4	156	624				
	9	10.0	4	303	1212				
	10	10.0	2	214	428				
	11	10.0	2	225	450				
	12	10.0	1	337	337				
	13	10.0	2	539	1078				

RESUMO DO AÇO

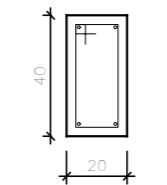
AÇO	DIAM (mm)	C.TOTAL (m)	PESO + 0% (kg)
CA50	6.3	80.7	19.8
	10.0	100.3	61.8
PESO TOTAL (kg)			
CA50		81.6	

Volume de concreto (C-35) = 1.18 m³
Área de forma = 13.62 m²

V3
ESC 1:25

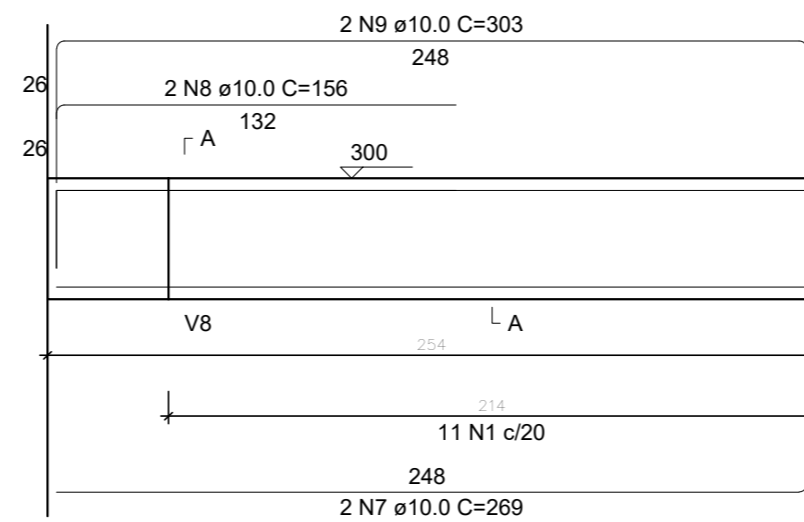


SEÇÃO A-A
ESC 1:25

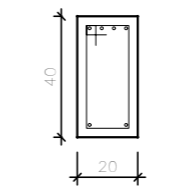


34
14
8 N1 ø6.3 C=108

V4
ESC 1:25

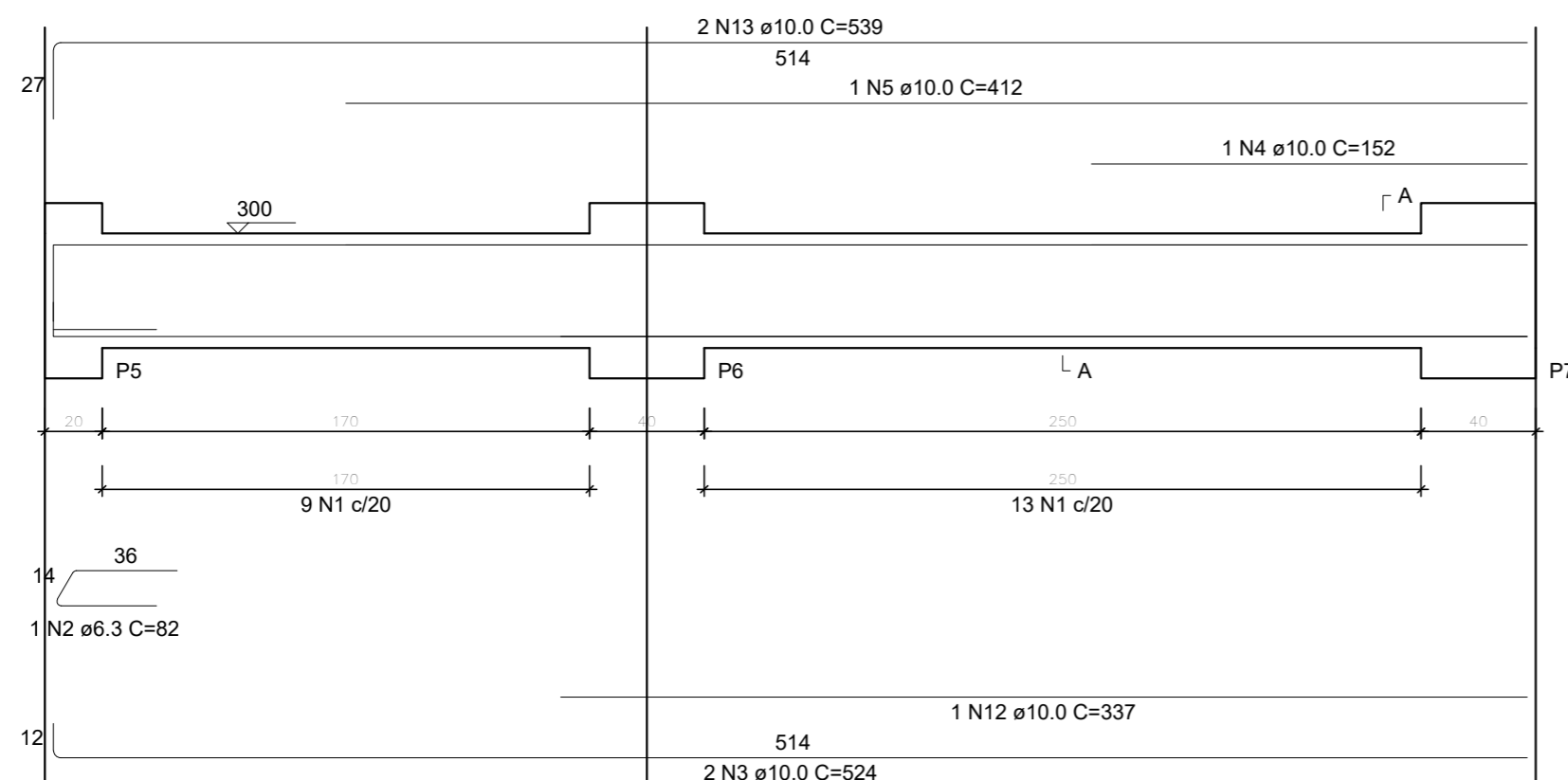


SEÇÃO A-A
ESC 1:25

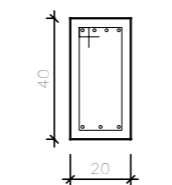


34
14
11 N1 ø6.3 C=108

V5
ESC 1:25



SEÇÃO A-A
ESC 1:25



34
14
22 N1 ø6.3 C=108

PROJETO ESTRUTURAL
PRÉDIO O - SEDE

VIGAS

V1, V2, V3, V4, V5
SEGUNDA PARADA

Escala: indicada

DESENHO

01

Desenho:

Revisão: 0

FOLHA

04/19

Data: 30/01/2024

Unidade: cm