

RELAÇÃO DO AÇO

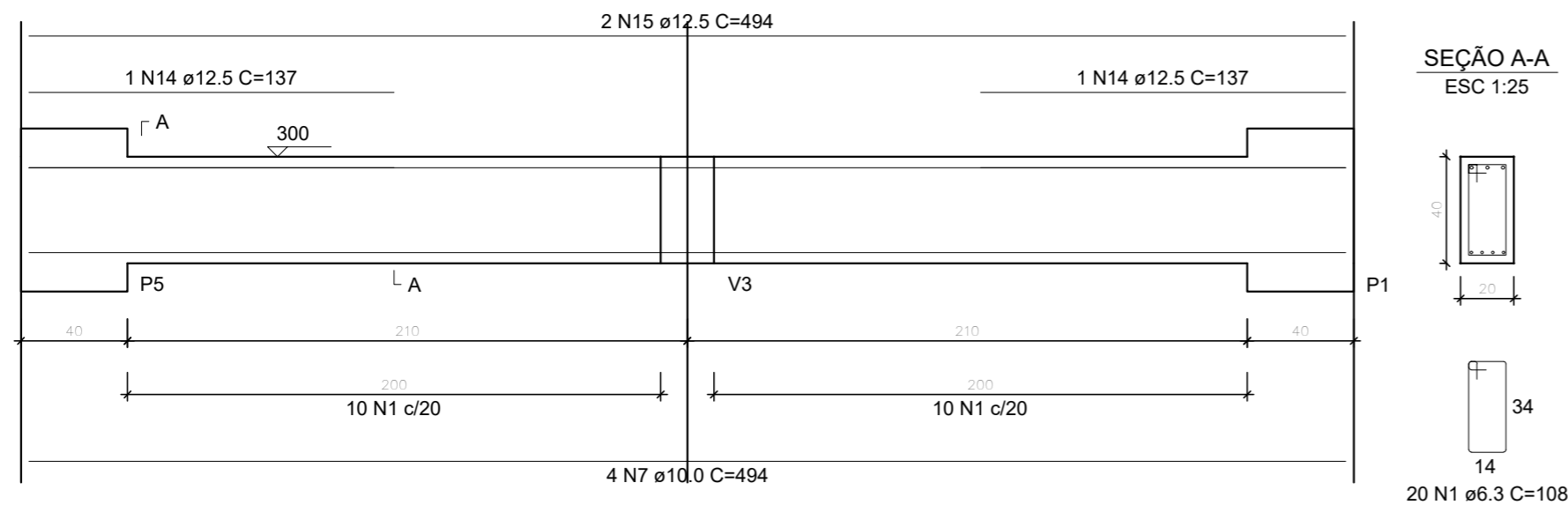
AÇO	N	DIAM (mm)	QUANT	C.UNIT (cm)	C.TOTAL (cm)
CA50	1	6.3	20	108	2160
	2	6.3	22	128	2816
	3	6.3	3	82	246
	4	6.3	92	148	13616
	5	6.3	12	88	1056
	6	8.0	4	507	2028
	7	10.0	4	494	1976
	8	10.0	4	513	2052
	9	10.0	2	149	298
	10	10.0	3	547	1641
	11	10.0	2	234	468
	12	10.0	1	117	117
	13	10.0	2	250	500
	14	12.5	2	137	274
	15	12.5	2	494	988
	16	16.0	1	467	467
	17	16.0	3	525	1575
	18	16.0	2	166	332
	19	16.0	2	211	422
	20	16.0	3	583	1749

RESUMO DO AÇO

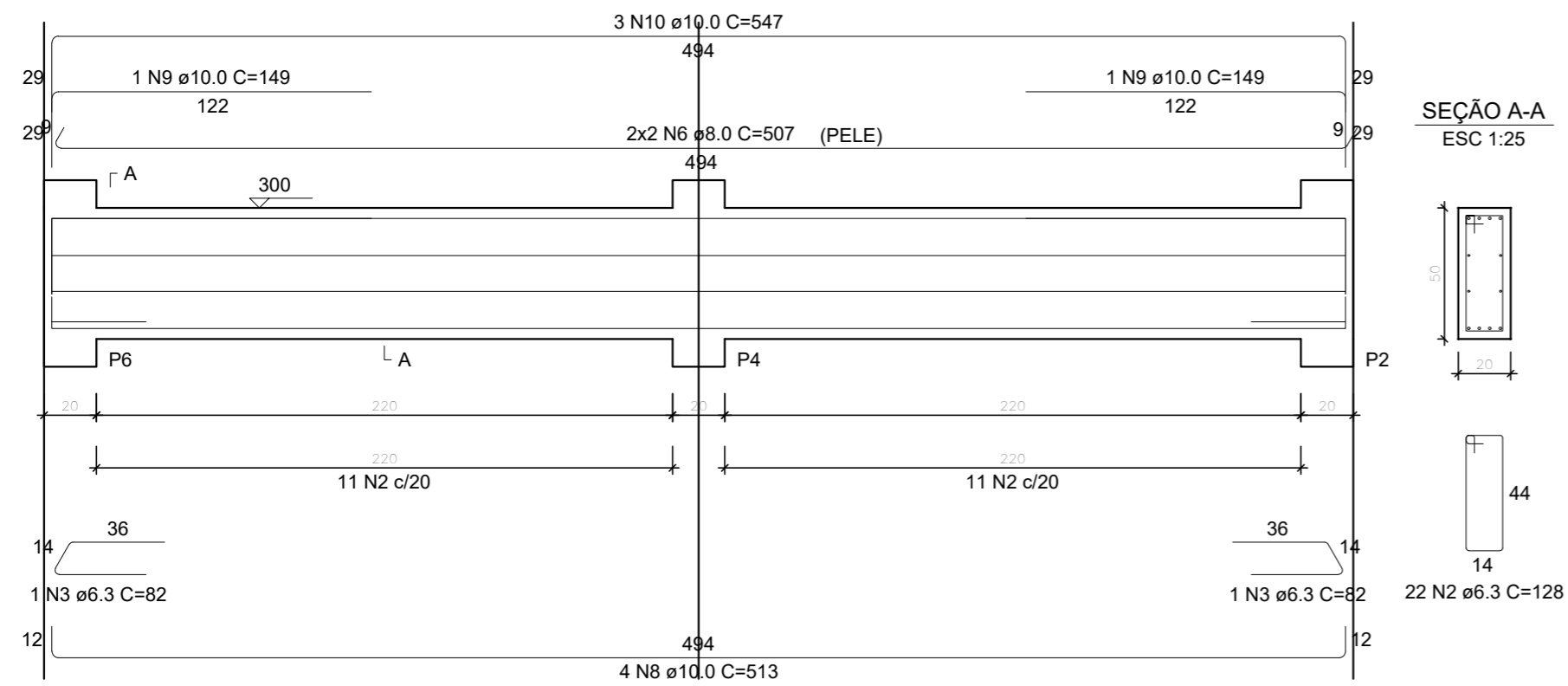
AÇO	DIAM (mm)	C.TOTAL (m)	PESO + 0% (kg)
CA50	6.3	198.9	48.7
	8.0	20.3	8
	10.0	70.5	43.5
	12.5	12.6	12.2
	16.0	45.5	71.7
PESO TOTAL (kg)			
CA50		184.1	

Volume de concreto (C-35) = 1.61 m³
Área de forma = 14.88 m²

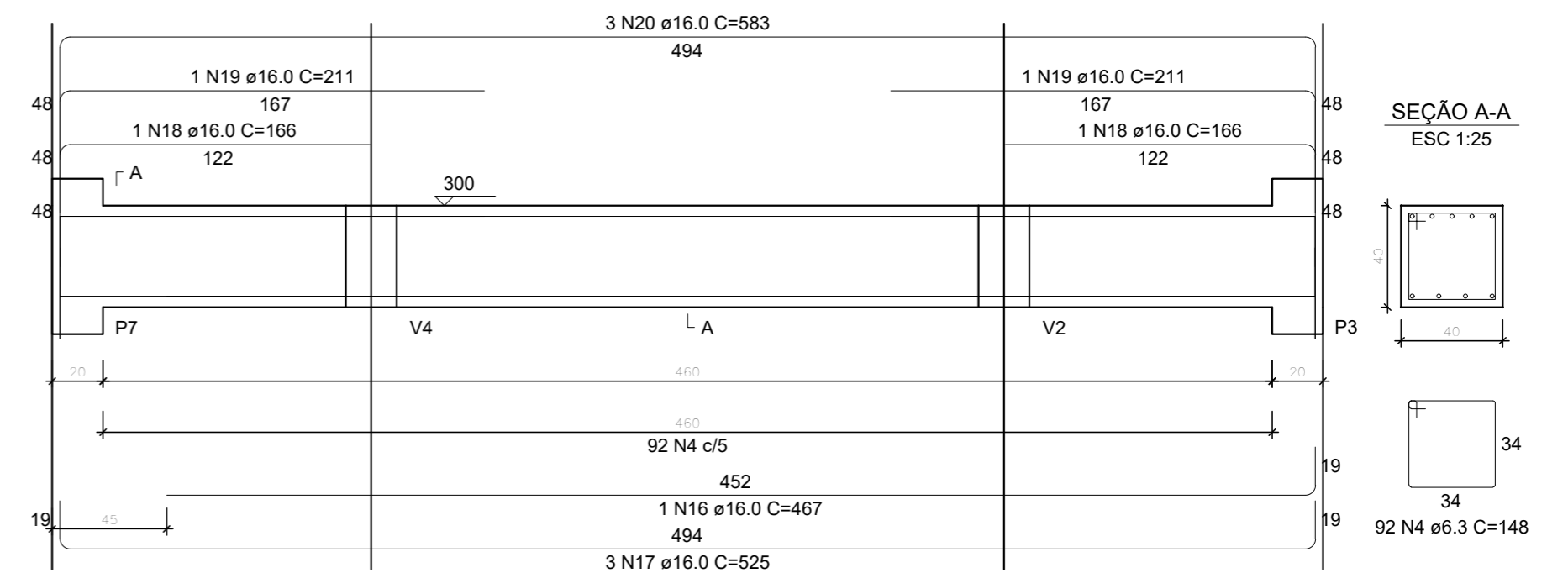
V6
ESC 1:25



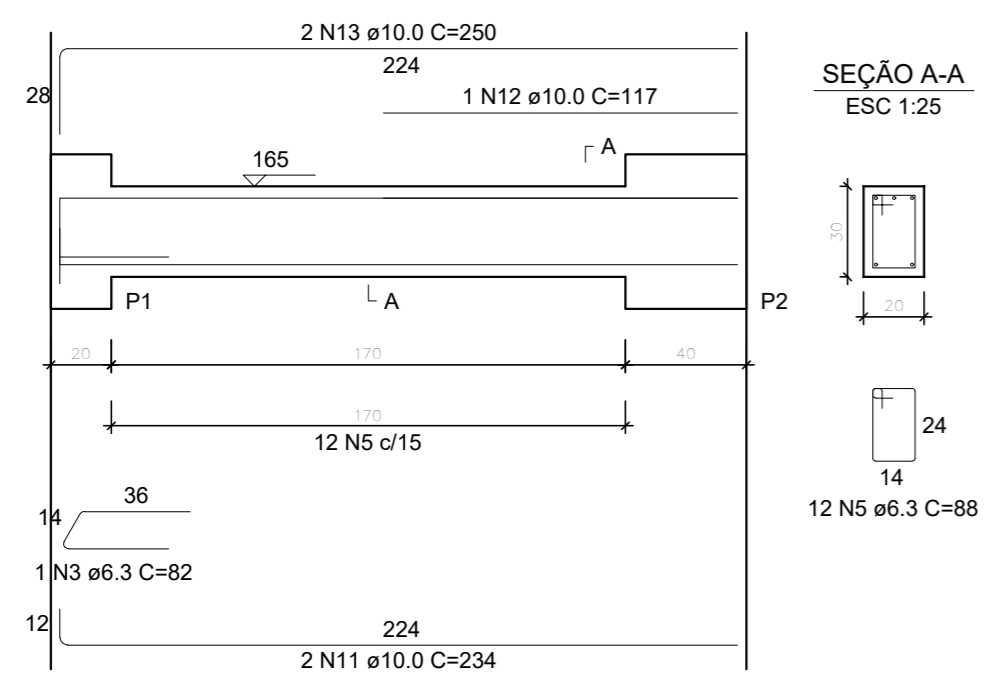
V7
ESC 1:25



V8
ESC 1:25



V9
ESC 1:25



PROJETO ESTRUTURAL
PRÉDIO O - SEDE

VIGAS

V6, V7, V8, V9
SEGUNDA PARADA

Escala: indicada

Desenho:

Data: 30/01/2024

Revisão: 0

Unidade: cm

DESENHO

01

FOLHA

05/19