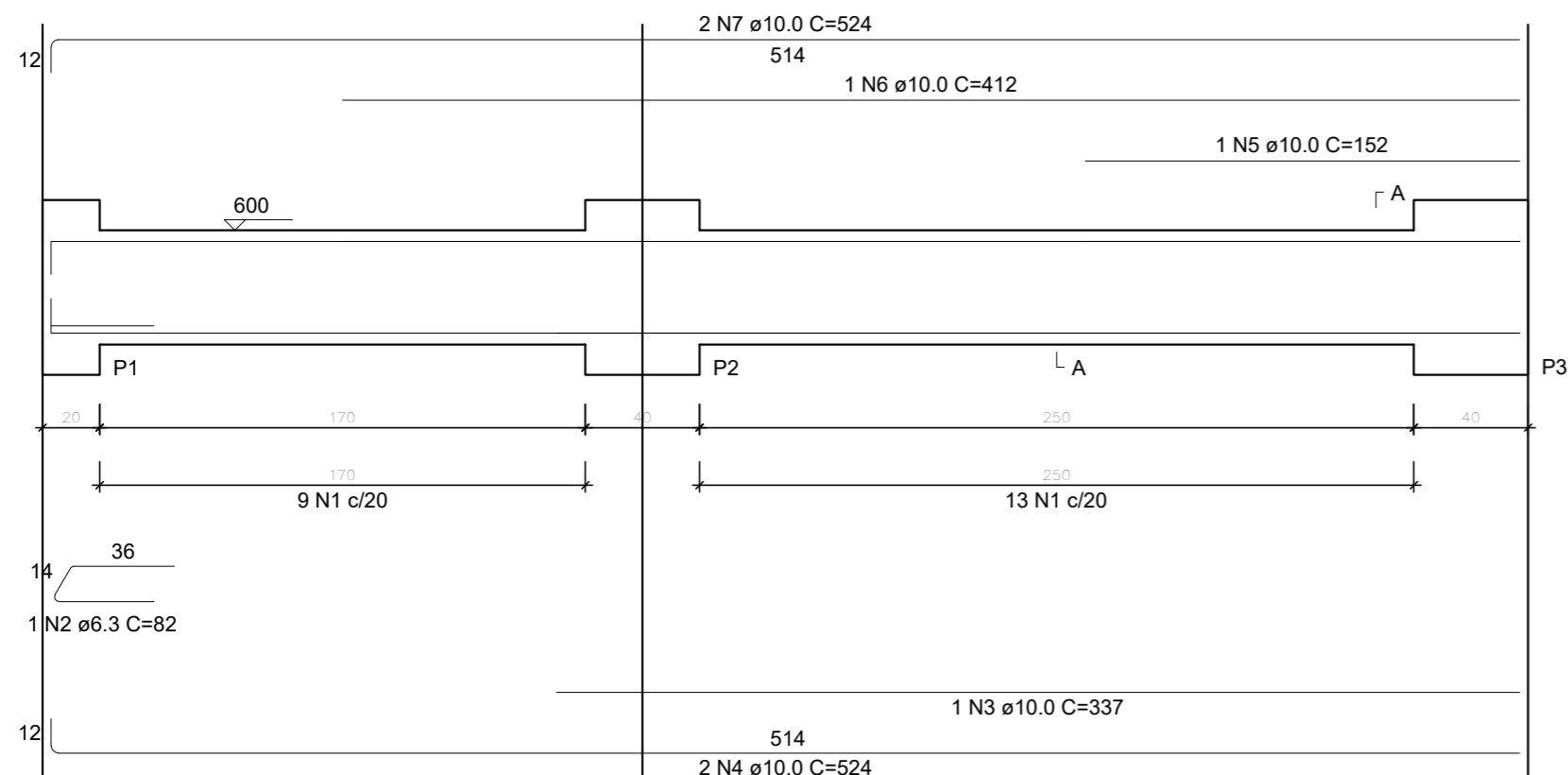


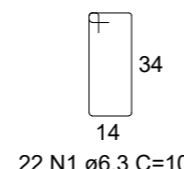
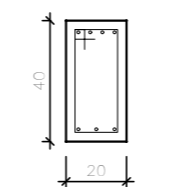
### V1

ESC 1:25



#### SEÇÃO A-A

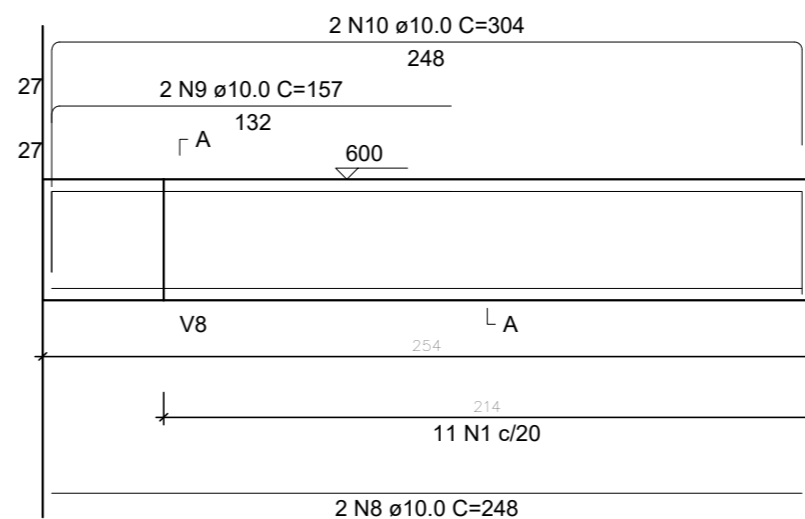
ESC 1:25



22 N1 ø6.3 C=108

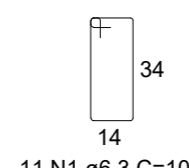
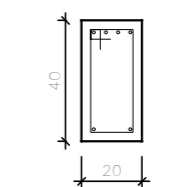
### V2

ESC 1:25



#### SEÇÃO A-A

ESC 1:25



11 N1 ø6.3 C=108

#### RELAÇÃO DO AÇO

AÇO	N	DIAM (mm)	QUANT	V1		V2		V3	
				C.UNIT (cm)	C.TOTAL (cm)	C.UNIT (cm)	C.TOTAL (cm)	C.UNIT (cm)	C.TOTAL (cm)
CA50	1	6.3	74	108	7992	108	7992	108	7992
	2	6.3	2	82	164	82	164	82	164
	3	10.0	2	337	674	337	674	337	674
	4	10.0	4	524	2096	524	2096	524	2096
	5	10.0	2	152	304	152	304	152	304
	6	10.0	1	412	412	412	412	412	412
	7	10.0	4	524	2096	524	2096	524	2096
	8	10.0	4	248	992	248	992	248	992
	9	10.0	4	157	628	157	628	157	628
	10	10.0	4	304	1216	304	1216	304	1216
	11	10.0	2	214	428	214	428	214	428
	12	10.0	2	225	450	225	450	225	450
	13	10.0	1	387	387	387	387	387	387

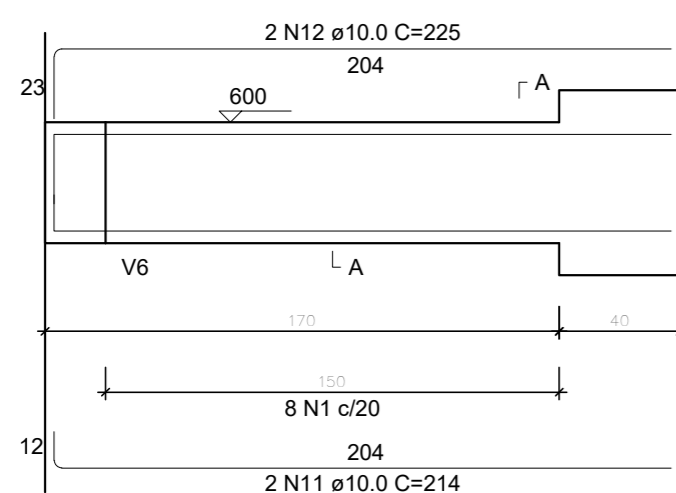
#### RESUMO DO AÇO

AÇO	DIAM (mm)	C.TOTAL (m)	PESO + 0% (kg)
CA50	6.3	81.6	20
	10.0	96.8	59.7
PESO TOTAL (kg)			
CA50		79.7	

Volume de concreto (C-35) = 1.18 m³  
Área de forma = 13.62 m²

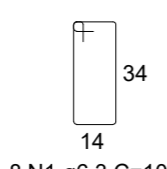
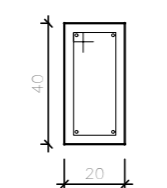
### V3

ESC 1:25



#### SEÇÃO A-A

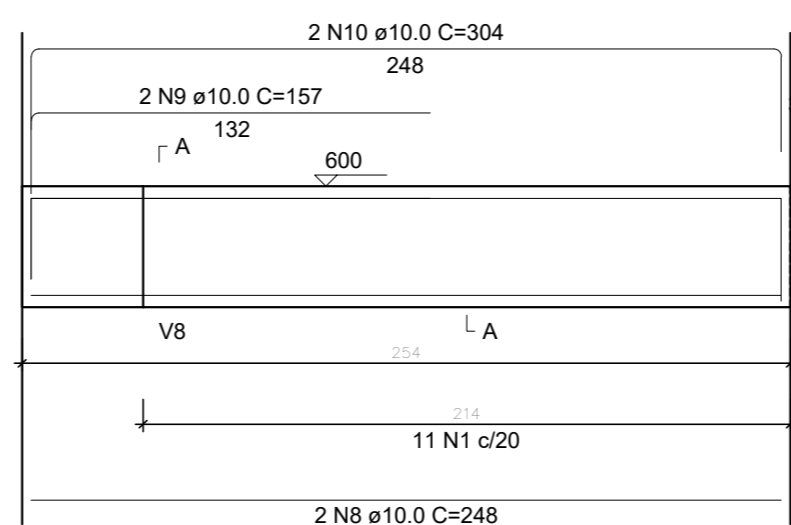
ESC 1:25



8 N1 ø6.3 C=108

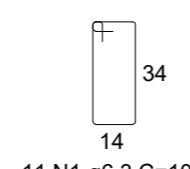
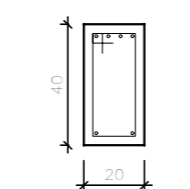
### V4

ESC 1:25



#### SEÇÃO A-A

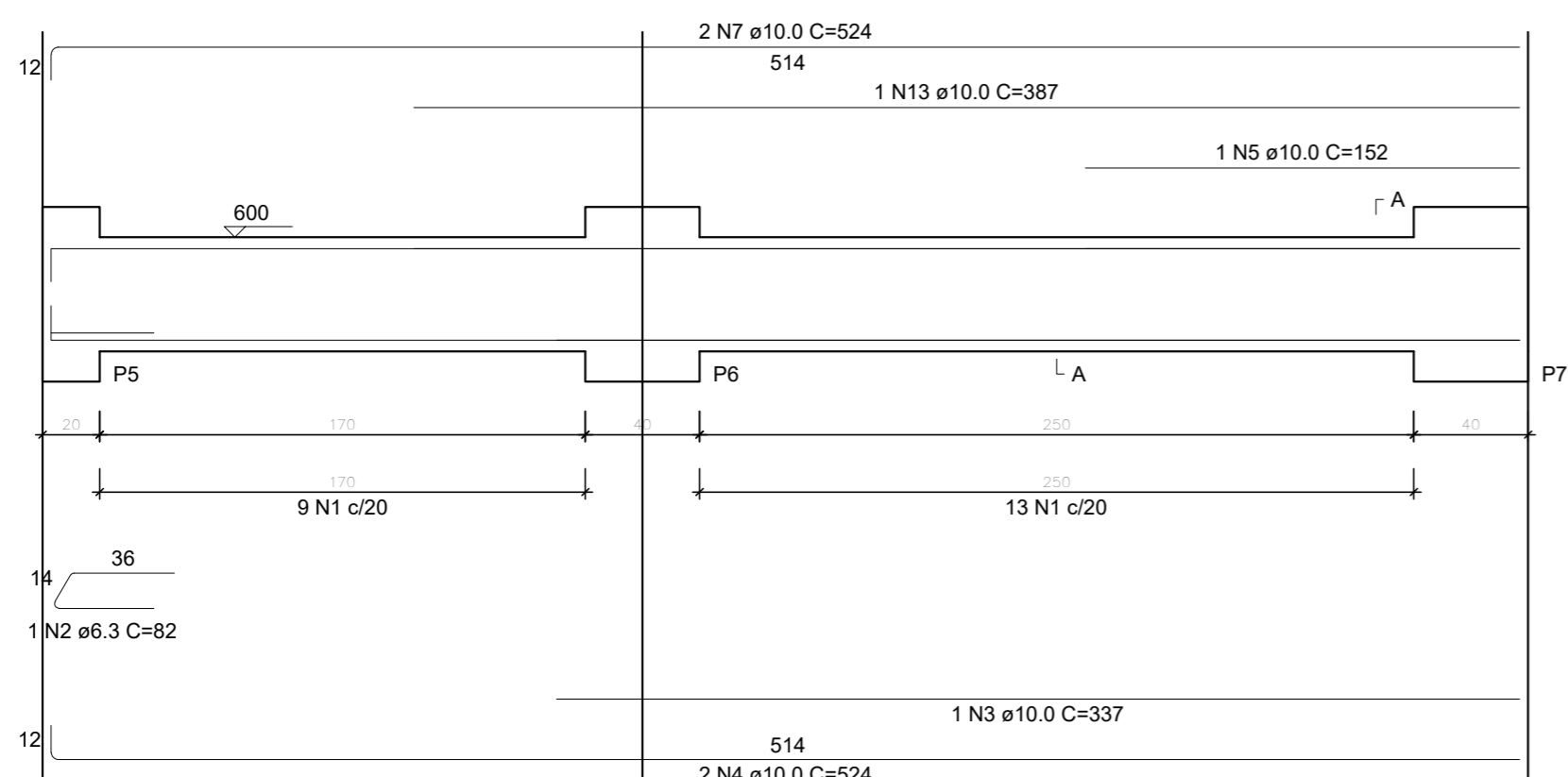
ESC 1:25



11 N1 ø6.3 C=108

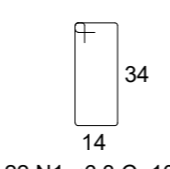
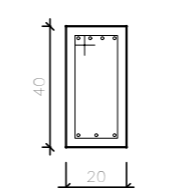
### V5

ESC 1:25



#### SEÇÃO A-A

ESC 1:25



22 N1 ø6.3 C=108

## PROJETO ESTRUTURAL

PRÉDIO O - SEDE

## VIGAS

V1, V2, V3, V4, V5

TERCEIRA PARADA

Escala: indicada

DESENHO

01

Desenho:

Revisão: 0

FOLHA

07/19

Data: 30/01/2024

Unidade: cm