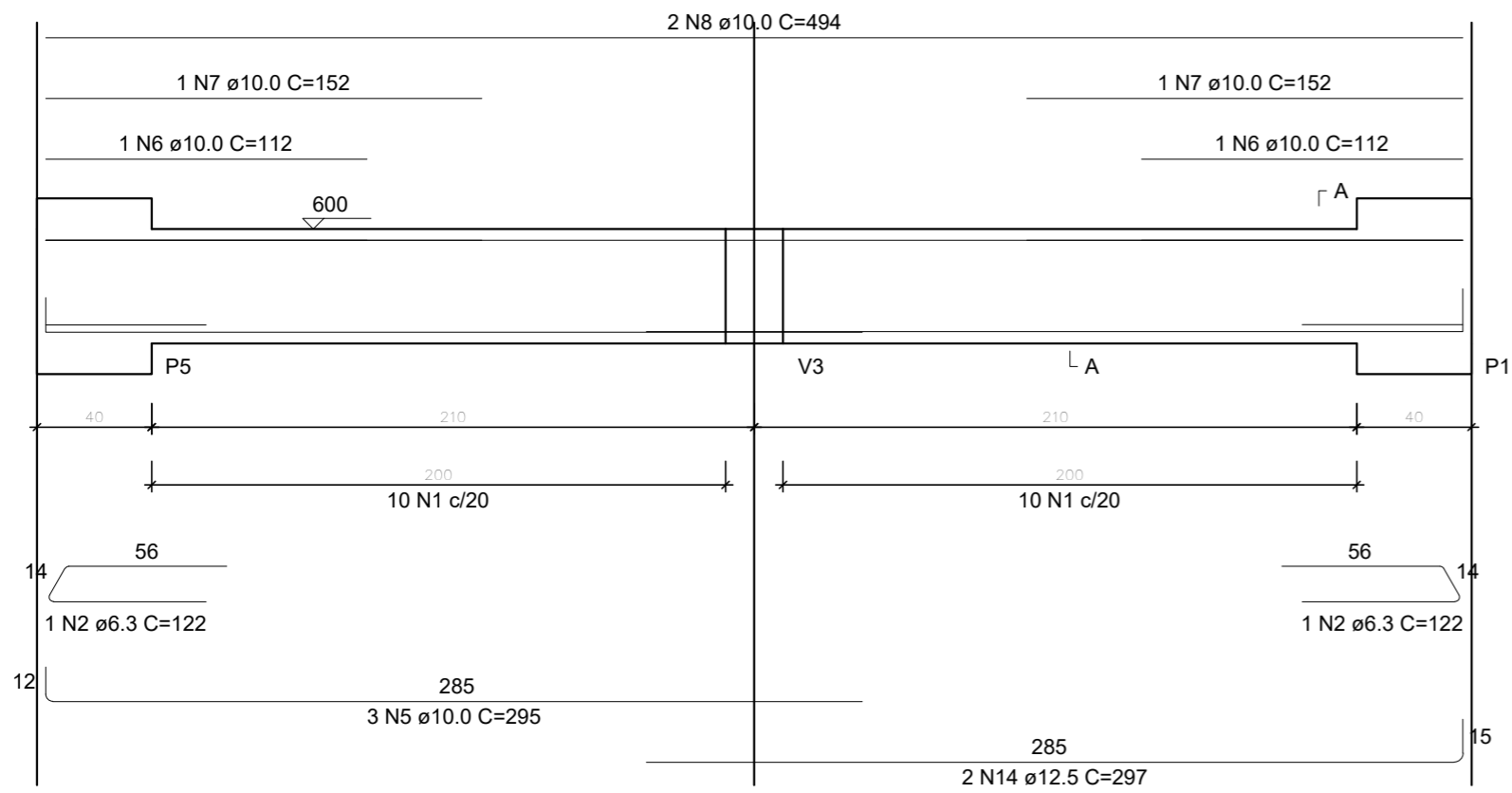


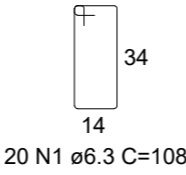
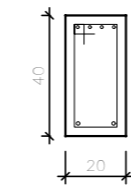
V6

ESC 1:25



SEÇÃO A-A

ESC 1:25



20 N1 ø6.3 C=108

RELAÇÃO DO AÇO

AÇO	N	DIAM (mm)	QUANT	V6		V7		V8	
				C.UNIT (cm)	C.TOTAL (cm)	C.UNIT (cm)	C.TOTAL (cm)	C.UNIT (cm)	C.TOTAL (cm)
CA50	1	6.3	42	108	4536				
	2	6.3	2	122	244				
	3	6.3	92	148	13616				
	4	6.3	12	88	1056				
	5	10.0	3	295	885				
	6	10.0	2	112	224				
	7	10.0	2	152	304				
	8	10.0	2	494	988				
	9	10.0	2	160	320				
	10	10.0	3	549	1647				
	11	10.0	3	234	702				
	12	10.0	1	122	122				
	13	10.0	2	249	498				
	14	12.5	2	297	594				
	15	12.5	2	518	1036				
	16	16.0	1	420	420				
	17	16.0	3	525	1575				
	18	16.0	2	166	332				
	19	16.0	2	211	422				
	20	16.0	3	583	1749				

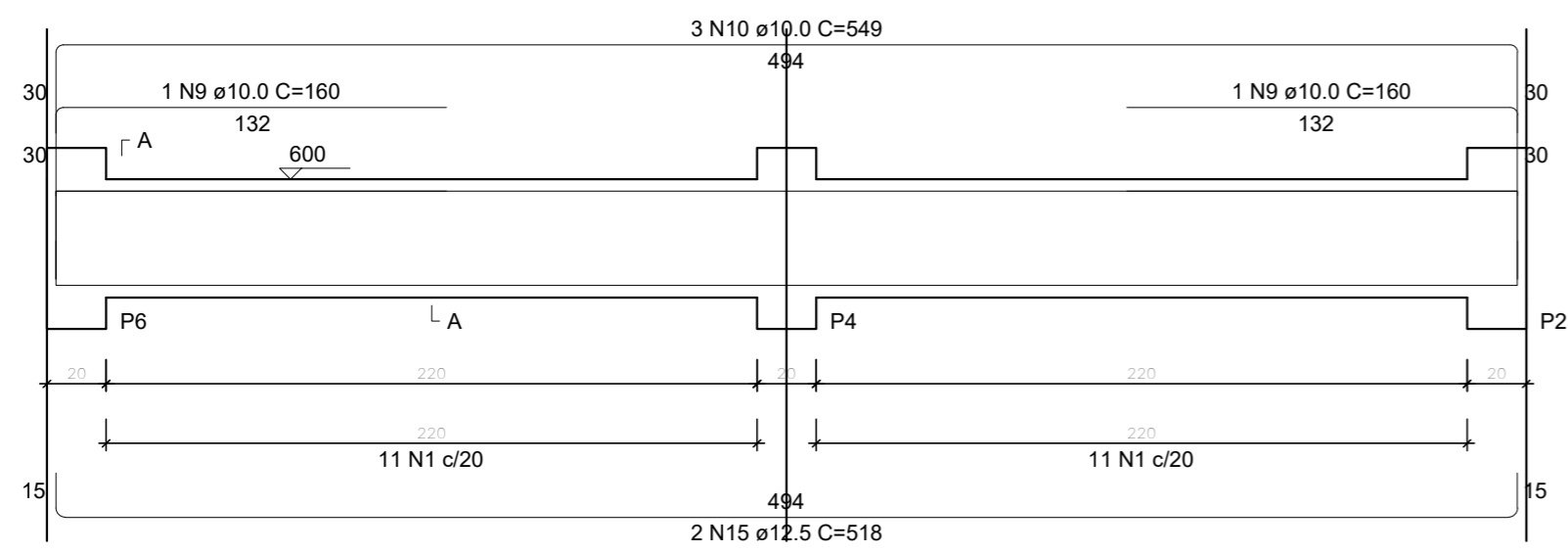
RESUMO DO AÇO

AÇO	DIAM (mm)	C.TOTAL (m)	PESO + 0% (kg)
CA50	6.3	194.5	47.6
	10.0	56.9	35.1
	12.5	16.3	15.7
		45	71
PESO TOTAL (kg)			
CA50		169.4	

Volume de concreto (C-35) = 1.53 m³
Área de forma = 14.00 m²

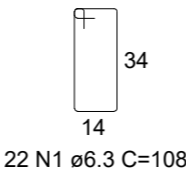
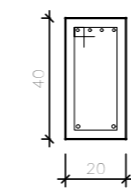
V7

ESC 1:25



SEÇÃO A-A

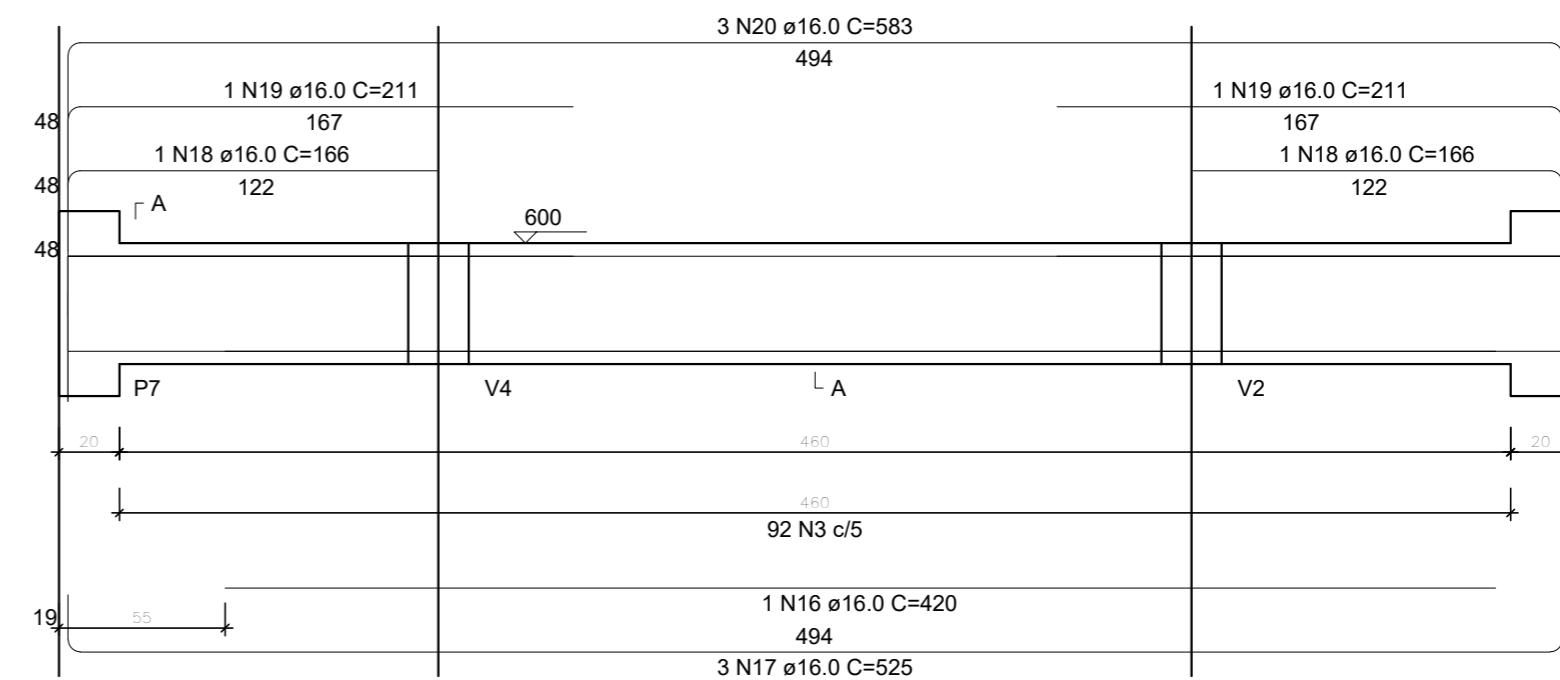
ESC 1:25



22 N1 ø6.3 C=108

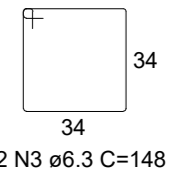
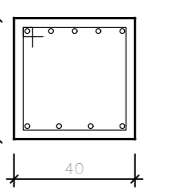
V8

ESC 1:25



SEÇÃO A-A

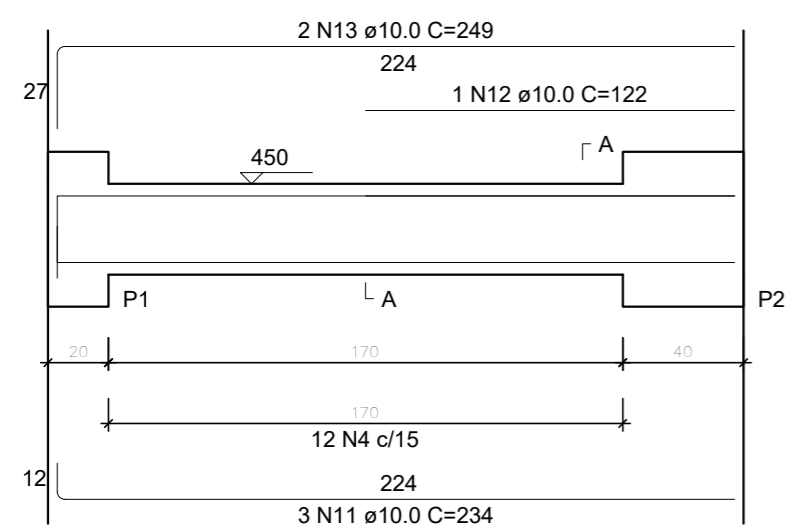
ESC 1:25



92 N3 ø6.3 C=148

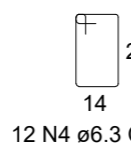
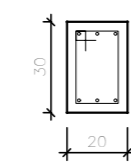
V9

ESC 1:25



SEÇÃO A-A

ESC 1:25



12 N4 ø6.3 C=88

PROJETO ESTRUTURAL

PRÉDIO O - SEDE

VIGAS

V6, V7, V8, V9
TERCEIRA PARADA

Escala: indicada

Desenho:

Data: 30/01/2024

Revisão: 0

Unidade: cm

DESENHO

01

FOLHA

08/19

UNIVERSIDADE FEDERAL DE ALFENAS

Rua Gabriel Monteiro da Silva, 700 - Centro
CEP: 37130-001 - Alfenas-MG
<http://www.unifal-mg.edu.br>