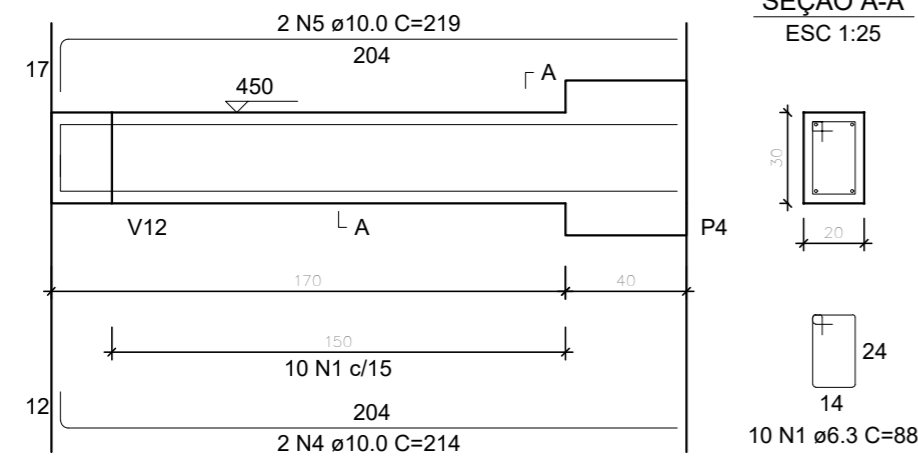


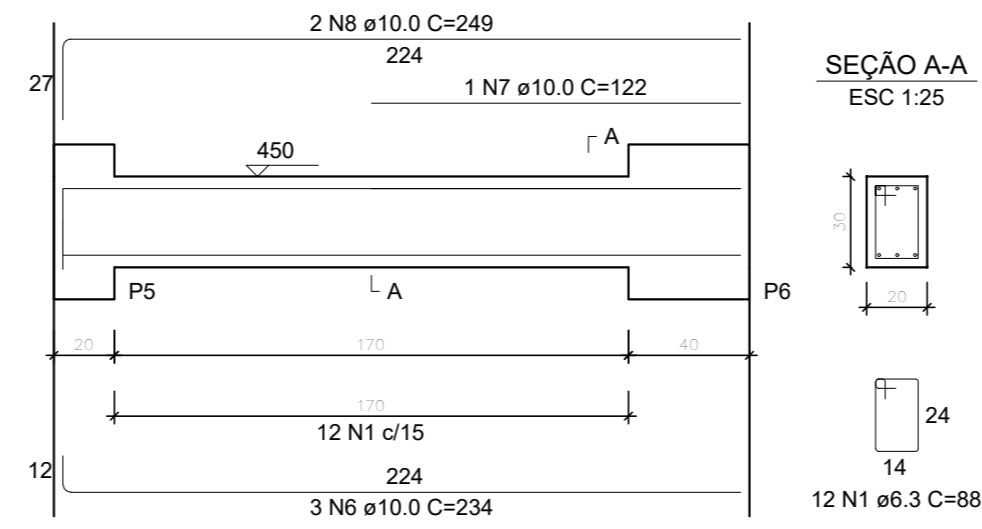
### V10

ESC 1:25



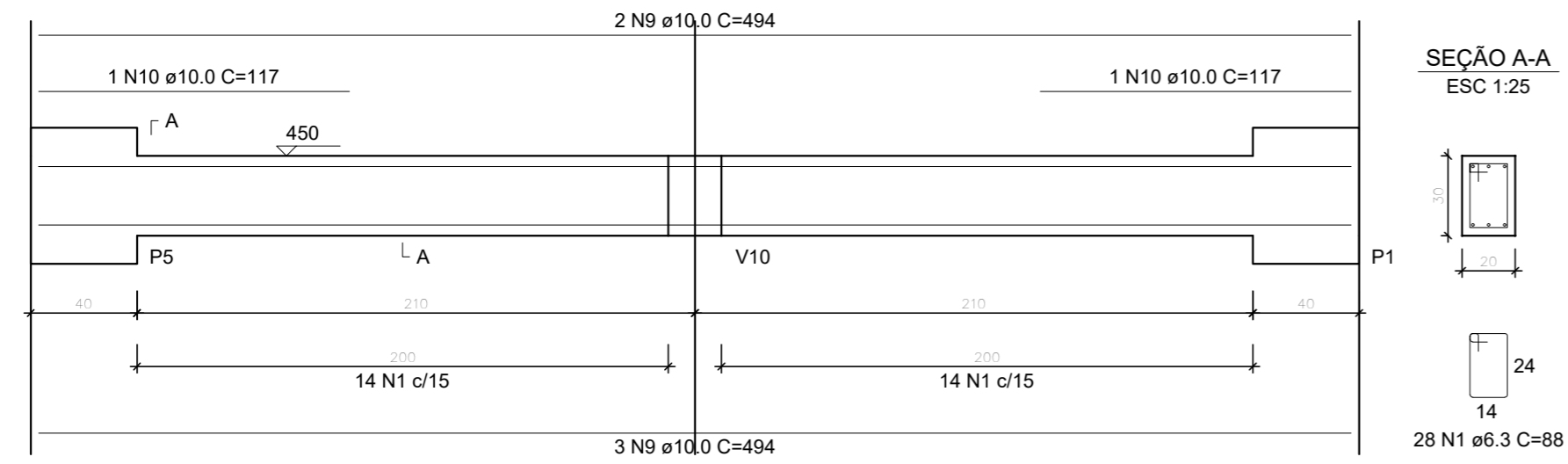
### V11

ESC 1:25



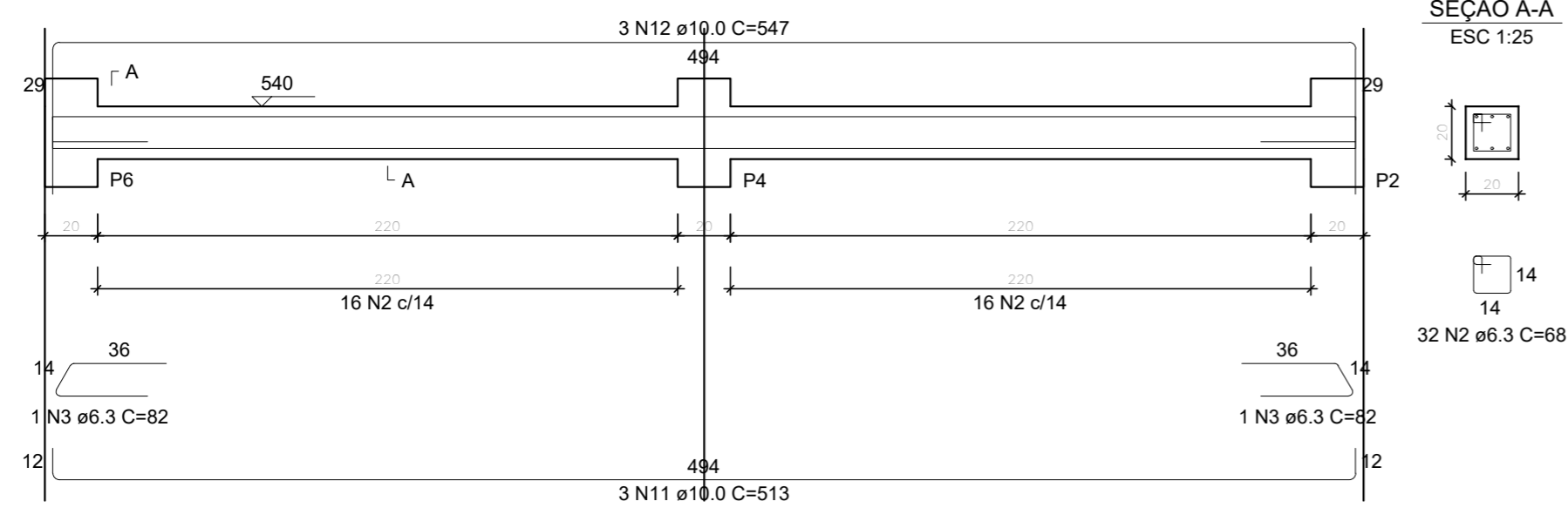
### V12

ESC 1:25



### VERGA

ESC 1:25



#### RELAÇÃO DO AÇO

AÇO	N	DIAM (mm)	QUANT	C.UNIT (cm)	C.TOTAL (cm)
CA50	1	6.3	50	88	4400
	2	6.3	32	68	2176
	3	6.3	2	82	164
	4	10.0	2	214	428
	5	10.0	2	219	438
	6	10.0	3	234	702
	7	10.0	1	122	122
	8	10.0	2	249	498
	9	10.0	5	494	2470
	10	10.0	2	117	234
	11	10.0	3	513	1539
	12	10.0	3	547	1641

#### RESUMO DO AÇO

AÇO	DIAM (mm)	C.TOTAL (m)	PESO + 0% (kg)
CA50	6.3	67.4	16.5
	10.0	80.7	49.8
PESO TOTAL (kg)			
CA50	66.3		

Volume de concreto (C-35) = 0.63 m³  
Área de forma = 8.64 m²

## PROJETO ESTRUTURAL

PRÉDIO O - SEDE

### VIGAS

V10, V11, V12, VERGA  
TERCEIRA PARADA

Escala: indicada

Desenho:

Data: 30/01/2024

Revisão: 0

Unidade: cm

DESENHO

01

FOLHA

09/19

UNIVERSIDADE FEDERAL DE ALFENAS  
 Rua Gabriel Monteiro da Silva, 700 - Centro  
 CEP: 37130-001 - Alfenas-MG  
<http://www.unifal-mg.edu.br>