

RELAÇÃO DO AÇO

AÇO	N	DIAM (mm)	QUANT	C.UNIT (cm)	C.TOTAL (cm)
CA50	1	6.3	42	108	4536
	2	6.3	92	148	13616
	3	6.3	12	88	1056
	4	10.0	5	494	2470
	5	10.0	2	112	224
	6	10.0	2	152	304
	7	10.0	3	513	1539
	8	10.0	2	145	290
	9	10.0	3	539	1617
	10	10.0	3	234	702
	11	10.0	1	122	122
	12	10.0	2	248	496
	13	16.0	1	410	410
	14	16.0	3	525	1575
	15	16.0	1	158	158
	16	16.0	1	203	203
	17	16.0	2	178	356
	18	16.0	3	577	1731

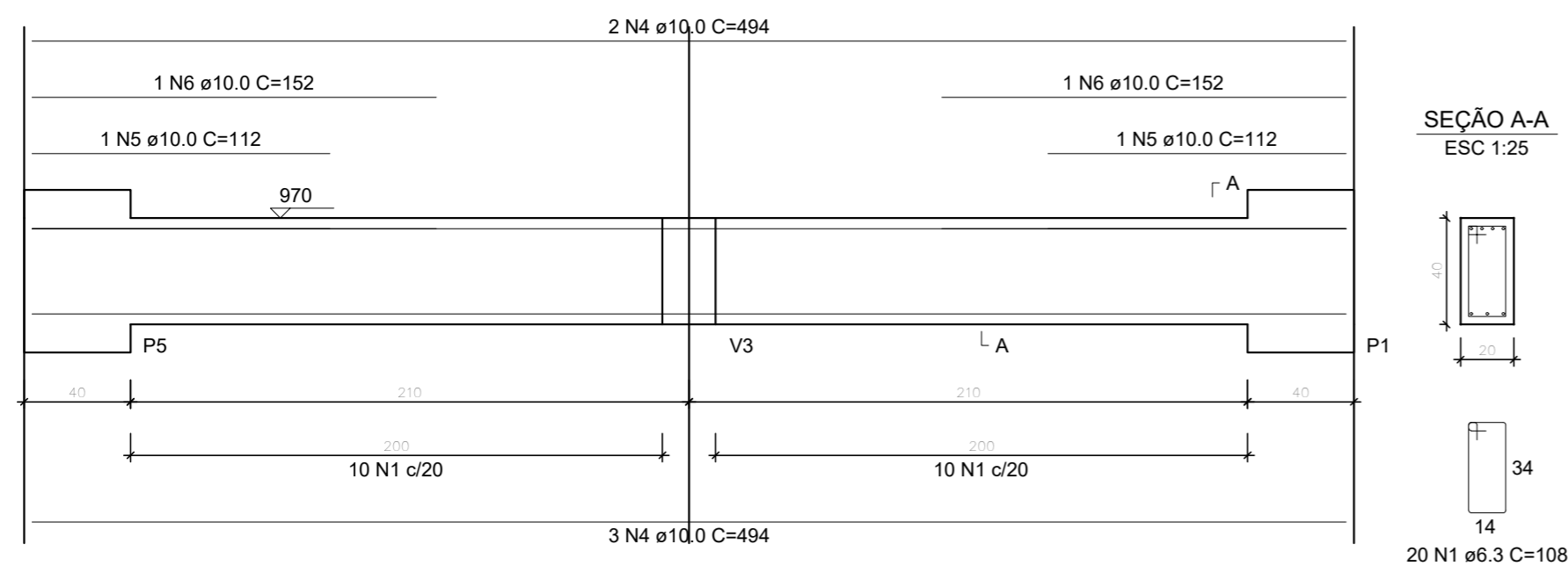
RESUMO DO AÇO

AÇO	DIAM (mm)	C.TOTAL (m)	PESO + 0% (kg)
CA50	6.3	192.1	47
	10.0	77.6	47.9
	16.0	44.3	70
PESO TOTAL (kg)			
CA50	164.8		

Volume de concreto (C-35) = 1.53 m³
 Área de forma = 14.00 m²

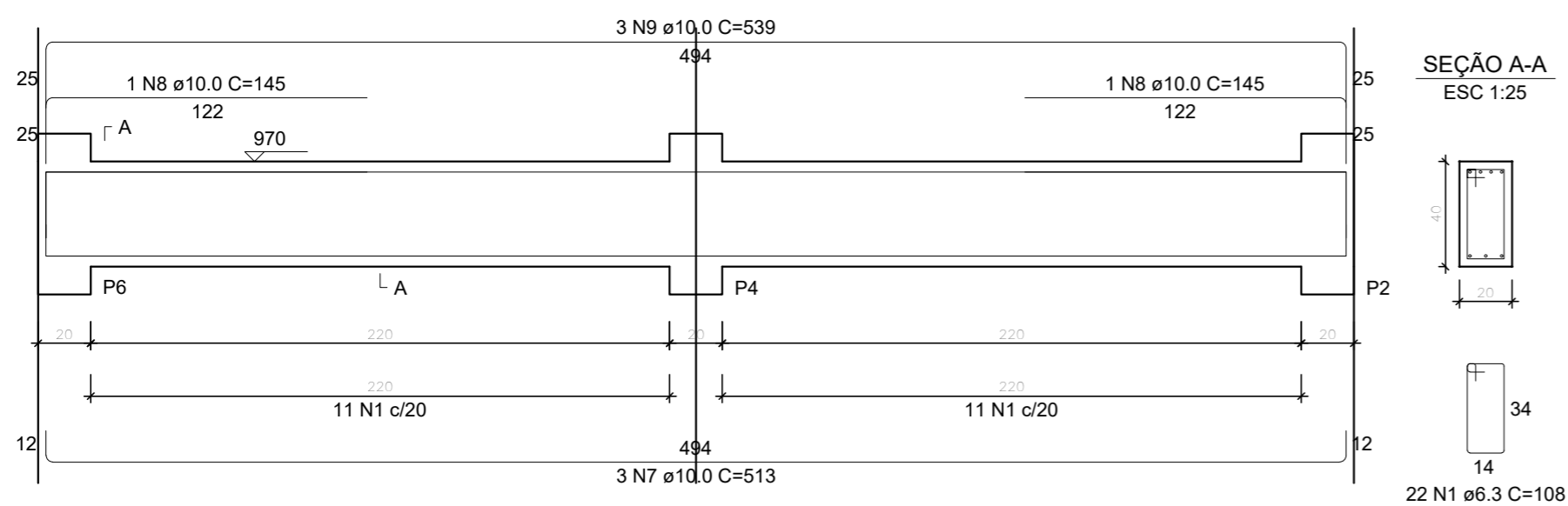
V6

ESC 1:25



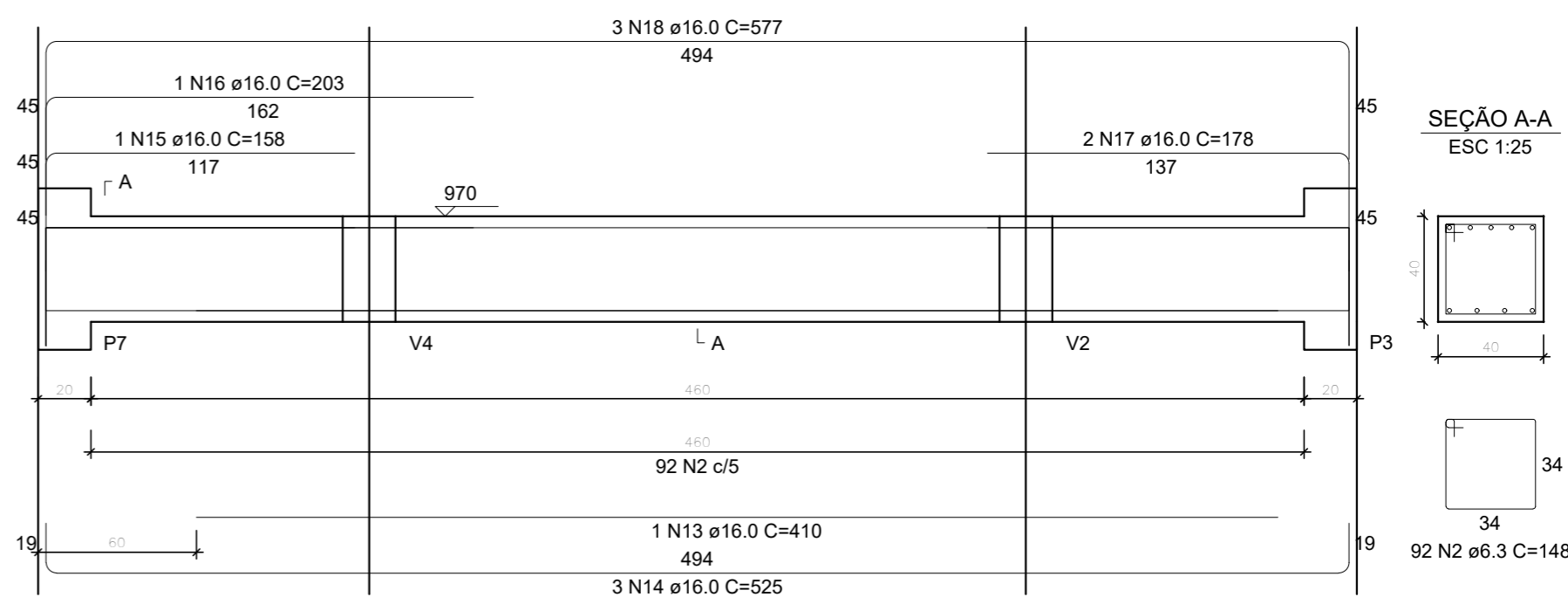
V7

ESC 1:25



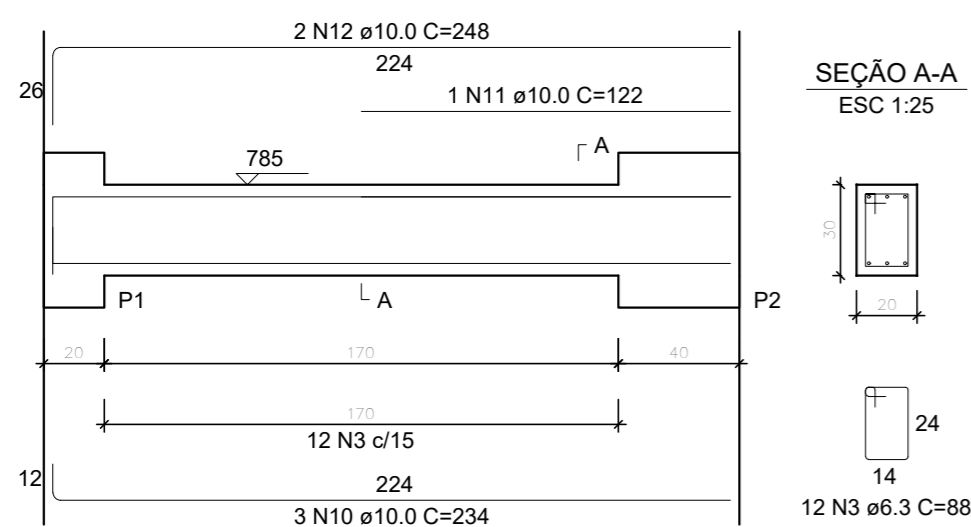
V8

ESC 1:25



V9

ESC 1:25



PROJETO ESTRUTURAL
PRÉDIO O - SEDE

VIGAS

V6, V7, V8, V9
QUARTA PARADA

Escala: indicada

Desenho:

Data: 30/01/2024

Revisão: 0

Unidade: cm

DESENHO

01

FOLHA

11/19