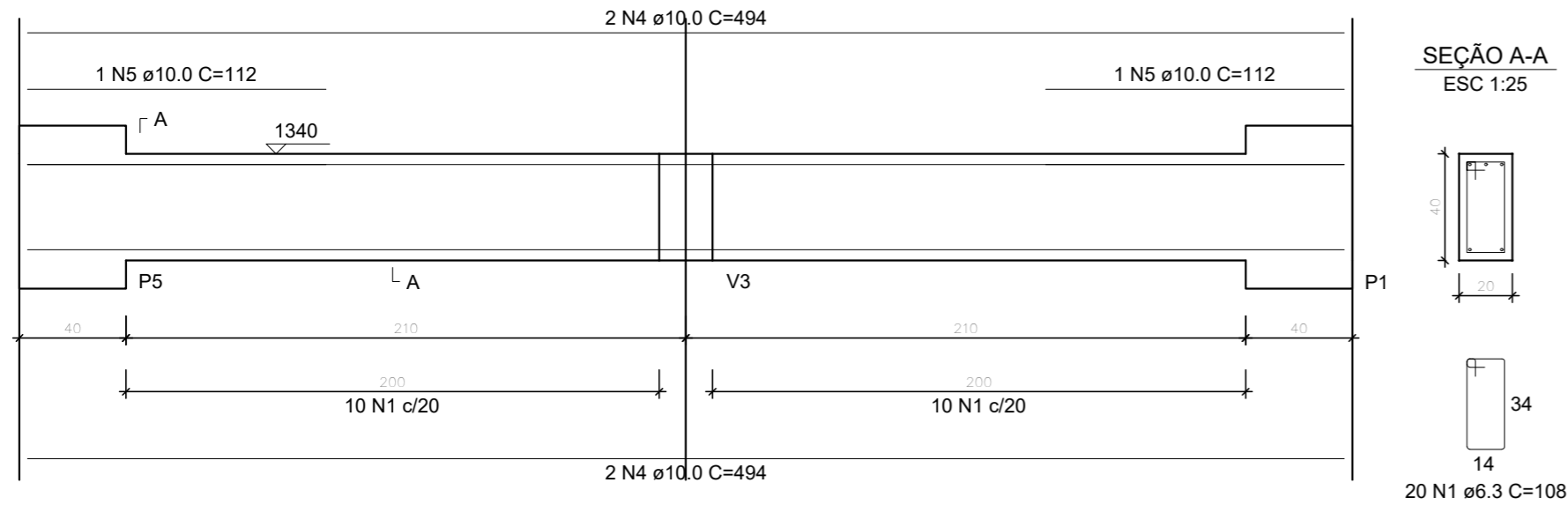


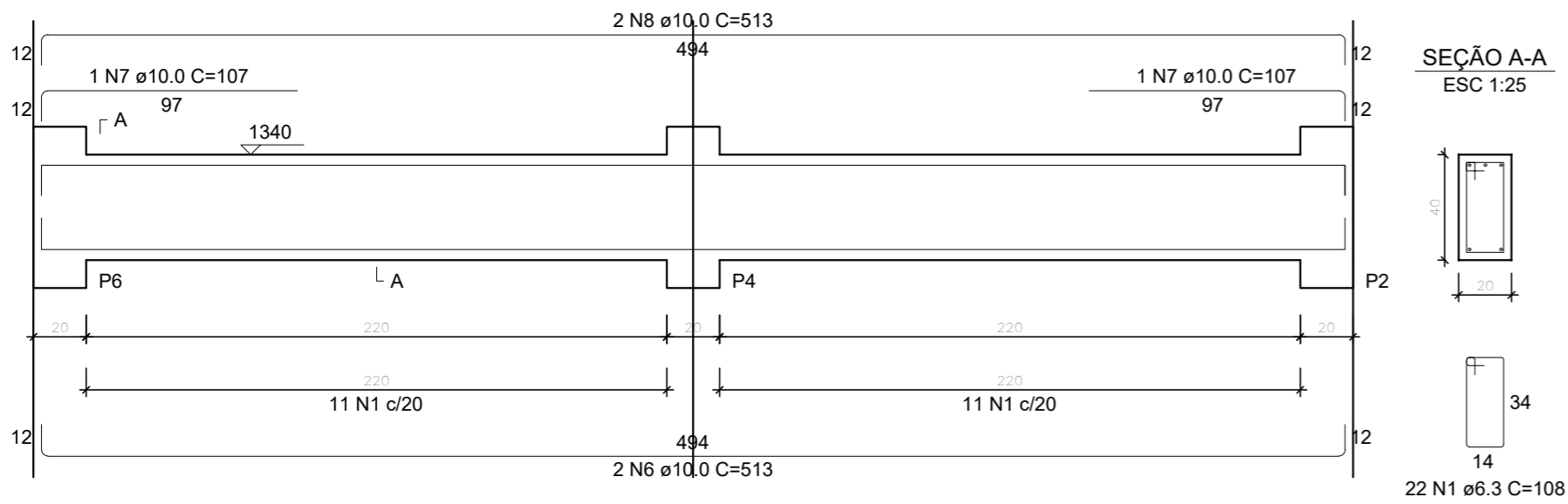
V6

ESC 1:25



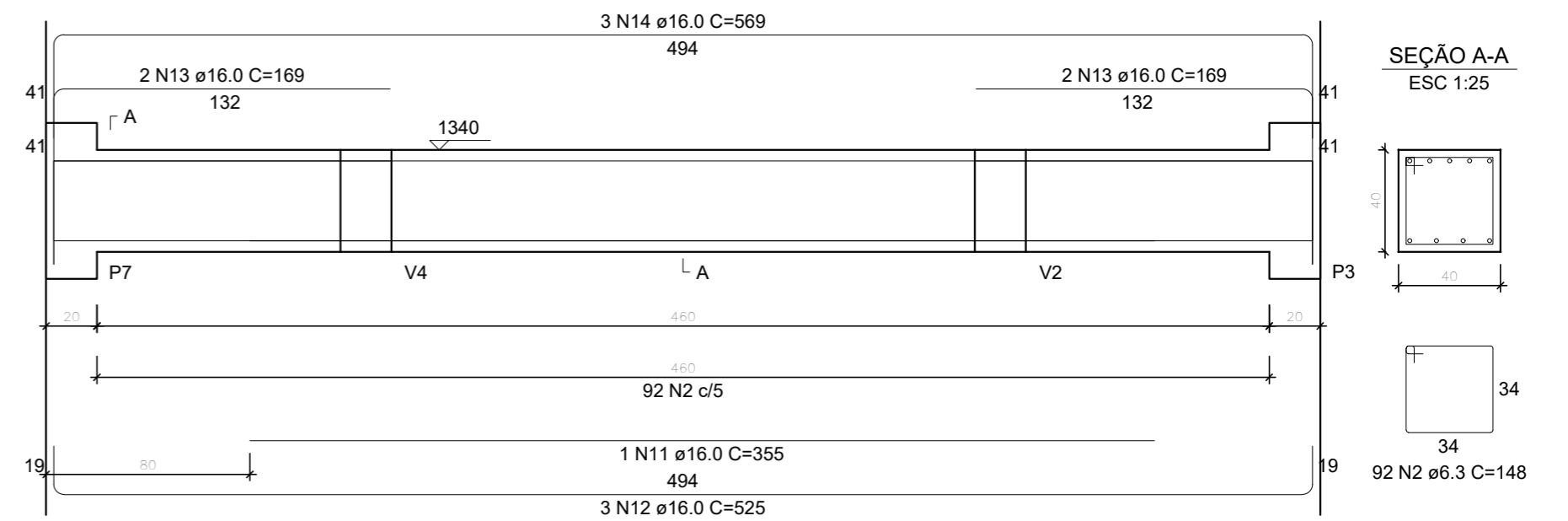
V7

ESC 1:25



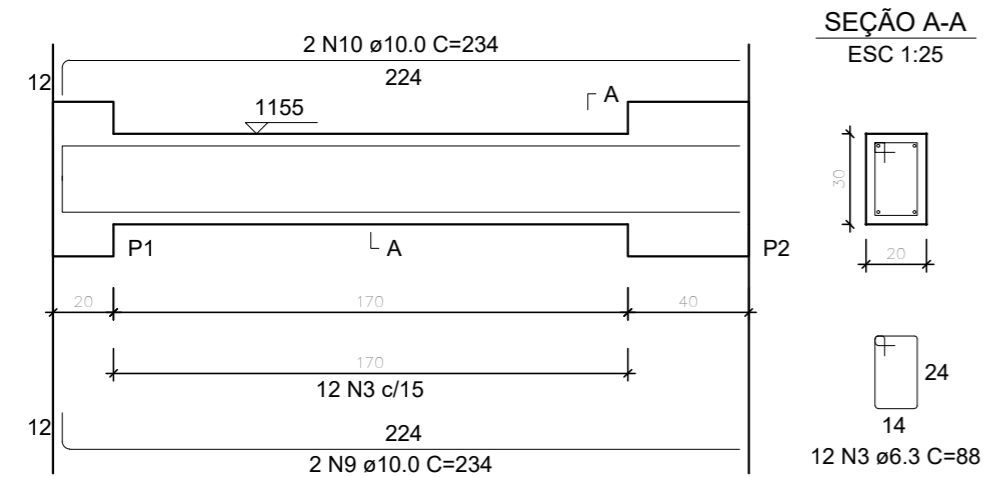
V8

ESC 1:25



V9

ESC 1:25



RELAÇÃO DO AÇO

AÇO	N	DIAM (mm)	QUANT	C.UNIT (cm)	C.TOTAL (cm)
CA50	1	6.3	42	108	4536
	2	6.3	92	148	13616
	3	6.3	12	88	1056
	4	10.0	4	494	1976
	5	10.0	2	112	224
	6	10.0	2	513	1026
	7	10.0	2	107	214
	8	10.0	2	513	1026
	9	10.0	2	234	468
	10	10.0	2	234	468
	11	16.0	1	355	355
	12	16.0	3	525	1575
	13	16.0	4	169	676
	14	16.0	3	569	1707

RESUMO DO AÇO

AÇO	DIAM (mm)	C.TOTAL (m)	PESO + 0% (kg)
CA50	6.3	192.1	47
	10.0	54	33.3
	16.0	43.1	68.1
PESO TOTAL (kg)			
CA50	148.4		

Volume de concreto (C-35) = 1.53 m³
Área de forma = 14.00 m²

PROJETO ESTRUTURAL

PRÉDIO O - SEDE

VIGAS

V6, V7, V8, V9
QUINTA PARADA

Escala: indicada

Desenho:

Data: 30/01/2024

Revisão: 0

Unidade: cm

DESENHO

01

FOLHA

14/19

UNIVERSIDADE FEDERAL DE ALFENAS
Rua Gabriel Monteiro da Silva, 700 - Centro
CEP: 37130-001 - Alfenas-MG
<http://www.unifal-mg.edu.br>