

RELAÇÃO DO AÇO

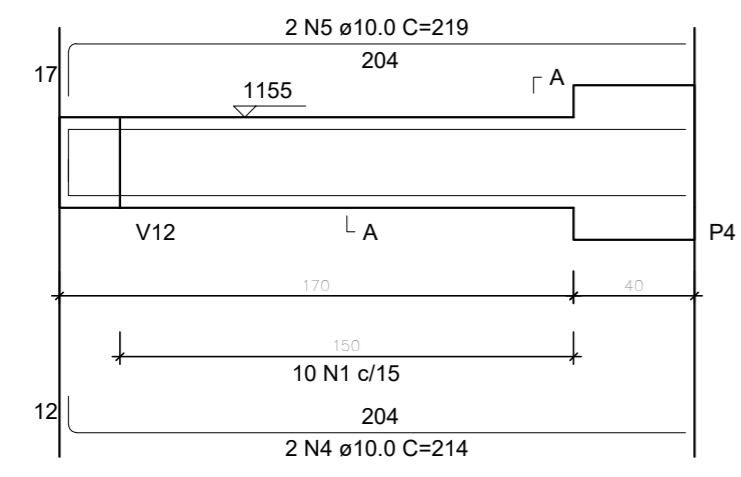
V10 VERGA		V11		V12	
AÇO	N	DIAM (mm)	QUANT	C.UNIT (cm)	C.TOTAL (cm)
CA50	1	6.3	50	88	4400
	2	6.3	32	68	2176
	3	6.3	2	82	164
	4	10.0	2	214	428
	5	10.0	2	219	438
	6	10.0	2	234	468
	7	10.0	2	234	468
	8	10.0	4	494	1976
	9	10.0	2	117	234
	10	10.0	2	513	1026
	11	10.0	2	82	164
	12	10.0	2	513	1026

RESUMO DO AÇO

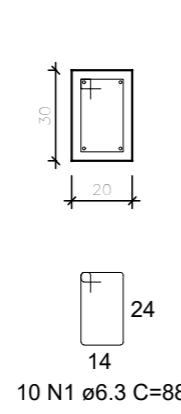
AÇO	DIAM (mm)	C.TOTAL (m)	PESO + 0% (kg)
CA50	6.3	67.4	16.5
	10.0	62.3	38.4
PESO TOTAL (kg)			
CA50		54.9	

Volume de concreto (C-35) = 0.63 m³  
Área de forma = 8.64 m²

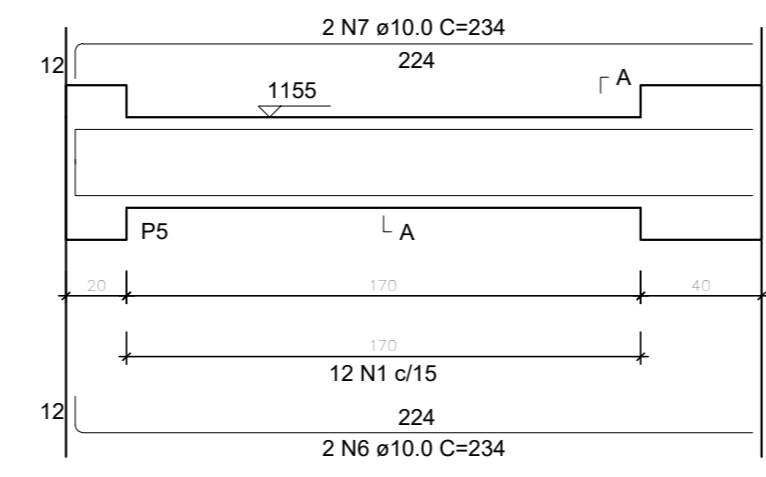
V10  
ESC 1:25



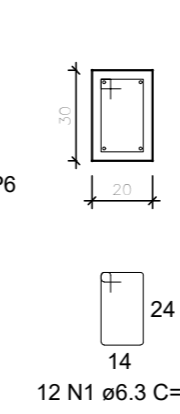
SEÇÃO A-A  
ESC 1:25



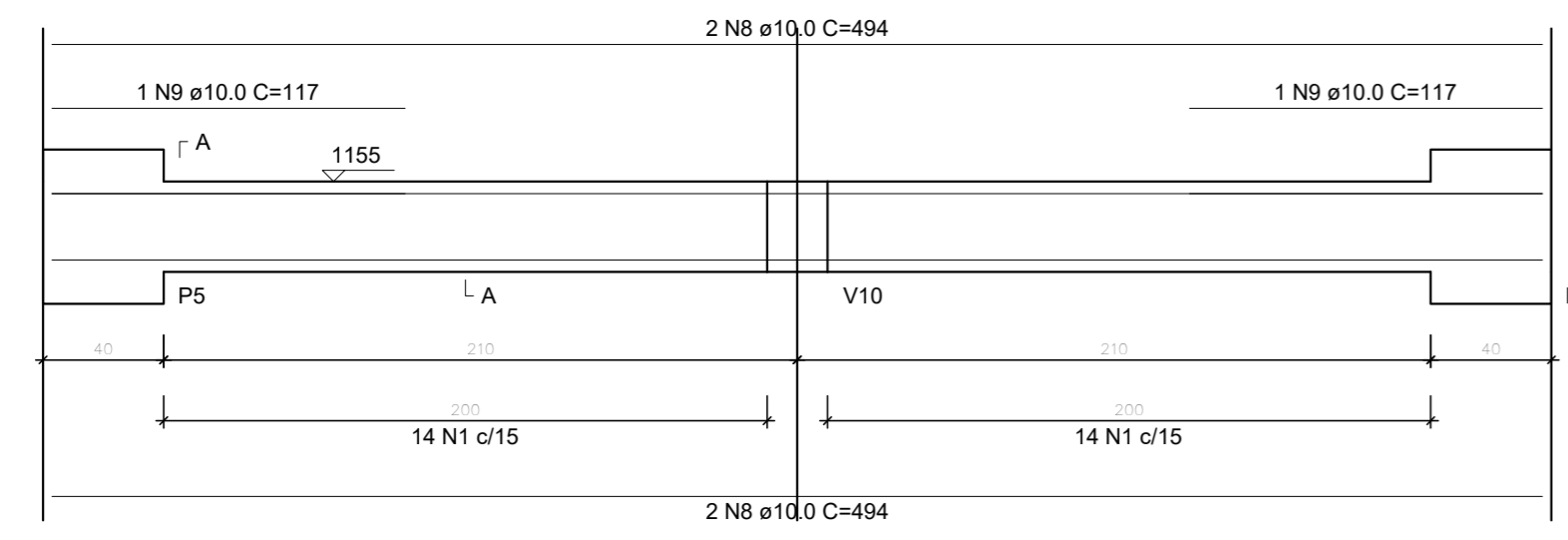
V11  
ESC 1:25



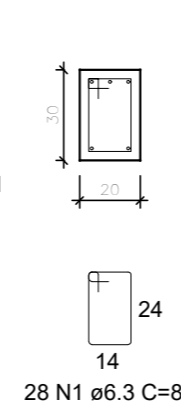
SEÇÃO A-A  
ESC 1:25



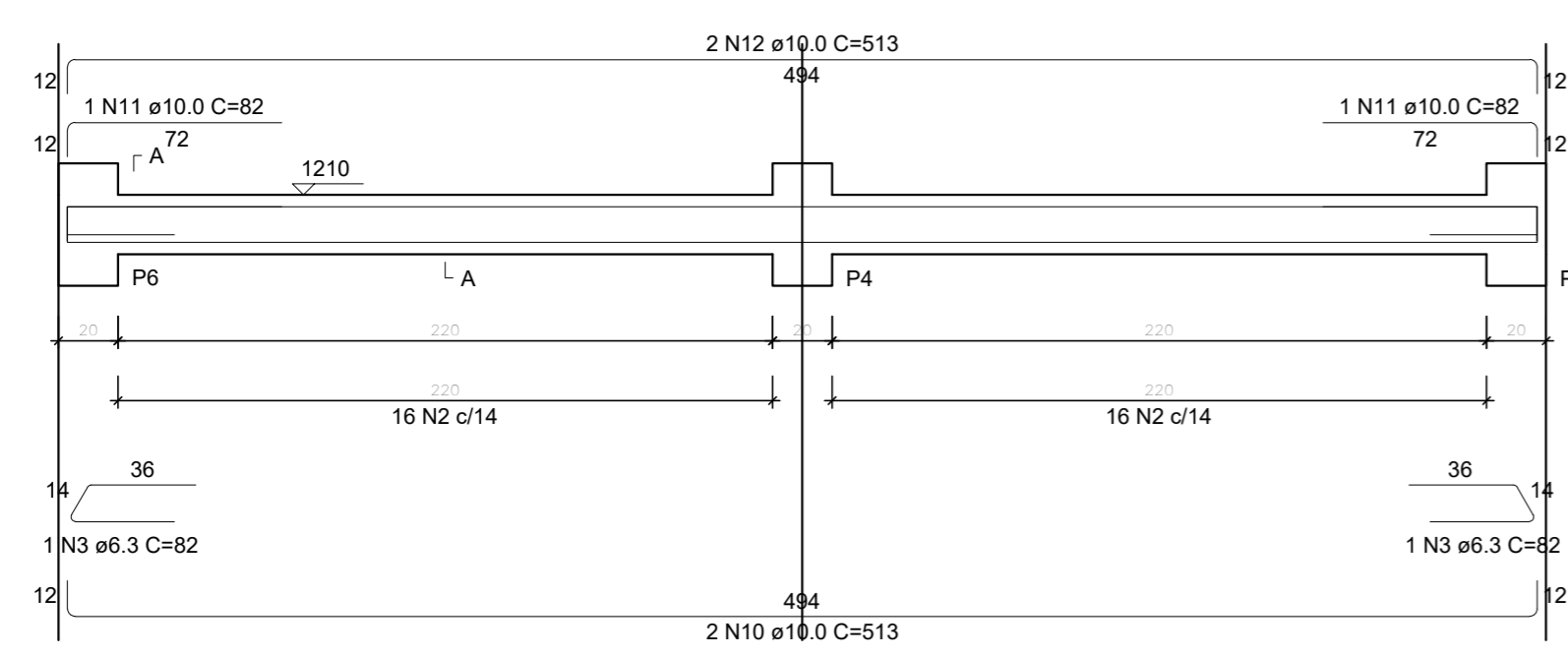
V12  
ESC 1:25



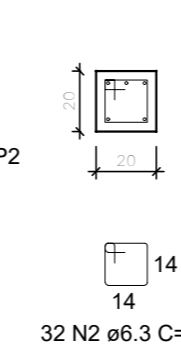
SEÇÃO A-A  
ESC 1:25



VERGA  
ESC 1:25



SEÇÃO A-A  
ESC 1:25



PROJETO ESTRUTURAL  
PRÉDIO O - SEDE

VIGAS

V10, V11, V12, VERGA  
QUINTA PARADA

UNIVERSIDADE FEDERAL DE ALFENAS  
Rua Gabriel Monteiro da Silva, 700 - Centro  
CEP: 37130-001 - Alfenas-MG  
<http://www.unifal-mg.edu.br>

Escala: indicada	DESENHO
Desenho:	Revisão: 0
Data: 30/01/2024	Unidade: cm

01  
FOLHA  
15/19