

RELAÇÃO DO AÇO

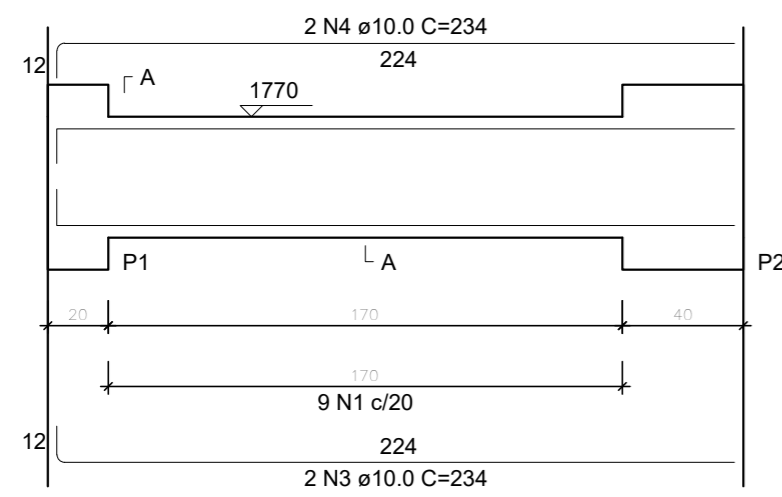
AÇO	N	DIAM (mm)	QUANT	V1		V2		V3	
				C.UNIT (cm)	C.TOTAL (cm)	C.UNIT (cm)	C.TOTAL (cm)	C.UNIT (cm)	C.TOTAL (cm)
CA50	1	6.3	74	108	7992				
	2	6.3	3	122	366				
	3	10.0	4	234	936				
	4	10.0	4	234	936				
	5	10.0	2	223	446				
	6	10.0	7	494	3458				
	7	10.0	2	127	254				
	8	10.0	2	513	1026				
	9	10.0	2	541	1082				
	10	12.5	3	270	810				

RESUMO DO AÇO

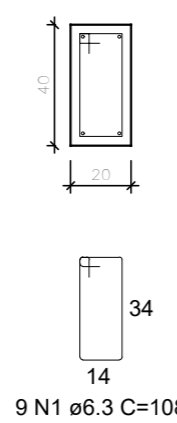
AÇO	DIAM (mm)	C.TOTAL (m)	PESO + 0% (kg)
CA50	6.3	83.6	20.5
	10.0	81.4	50.2
	12.5	8.1	7.8
PESO TOTAL (kg)			
CA50		78.4	

Volume de concreto (C-35) = 1.10 m³
 Área de forma = 11.30 m²

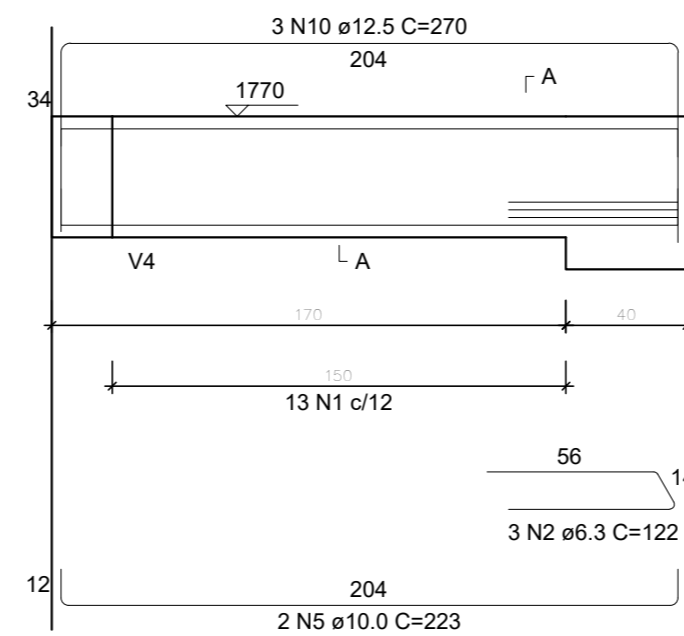
V1
ESC 1:25



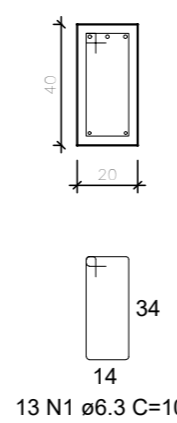
SEÇÃO A-A
ESC 1:25



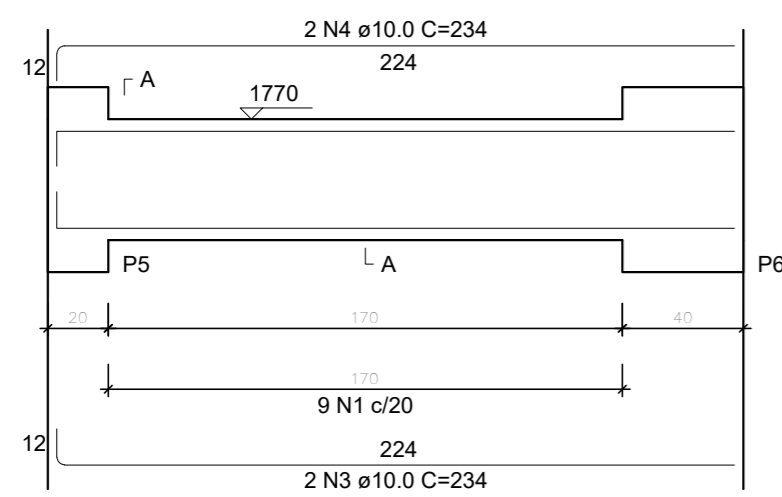
V2
ESC 1:25



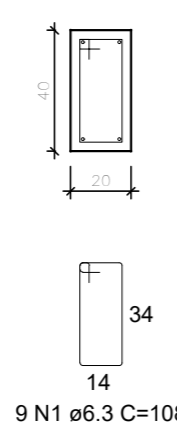
SEÇÃO A-A
ESC 1:25



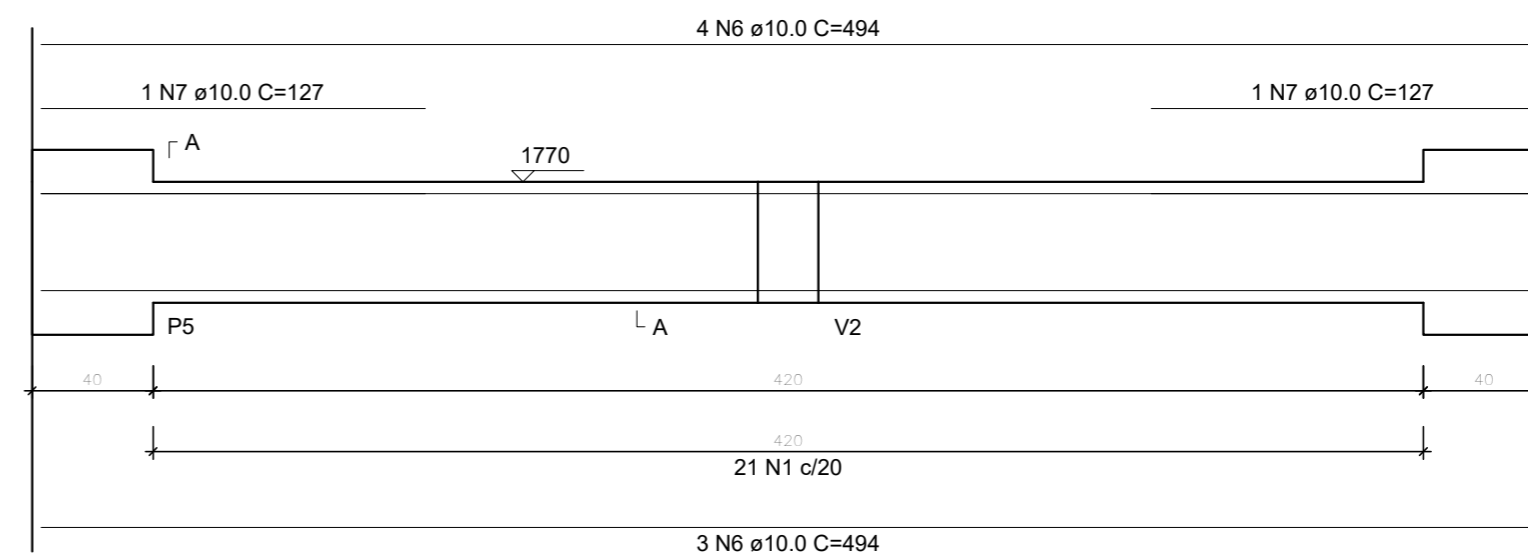
V3
ESC 1:25



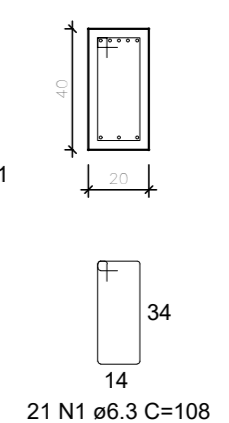
SEÇÃO A-A
ESC 1:25



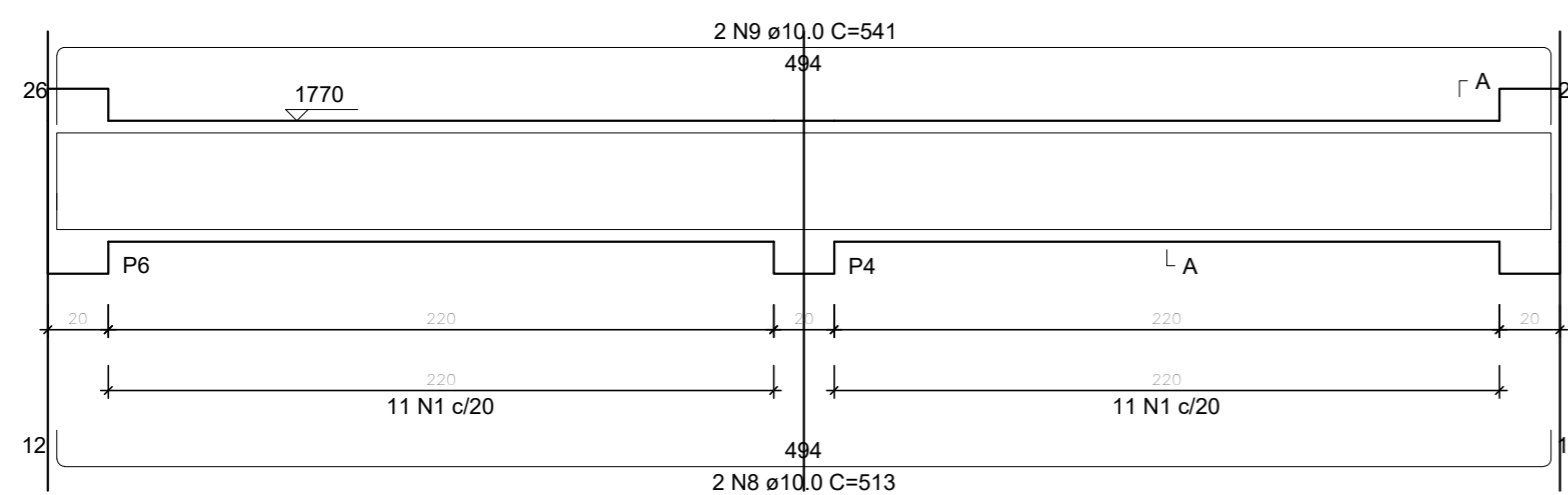
V4
ESC 1:25



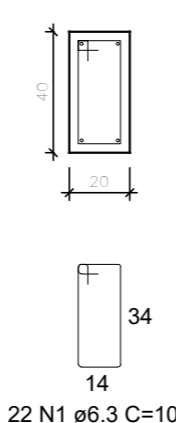
SEÇÃO A-A
ESC 1:25



V5
ESC 1:25



SEÇÃO A-A
ESC 1:25



PROJETO ESTRUTURAL
PRÉDIO O - SEDE

VIGAS

V1, V2, V3, V4, V5
CASA DE MÁQUINAS

Escala: indicada

Desenho:

Data: 30/01/2024

Revisão: 0

Unidade: cm

DESENHO

01

FOLHA

18/19